



UNIVERSITY of HAWAII
HAWAII COMMUNITY COLLEGE
Ke Kulanui Kaiāulu 'o Hawai'i

HAWAI'I COMMUNITY COLLEGE

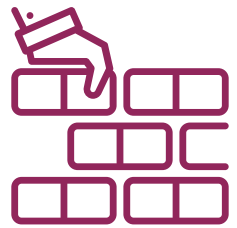
HAWAI'I COMMUNITY COLLEGE STUDENT BASIC NEEDS GOAL

To make the food security and human needs of our Hawai'i College (Hawai'i CC) students a priority through holistic, consistent and accessible support services which will increase their perpetual self-sufficiency and academic success.

CAMPUS PILLARS

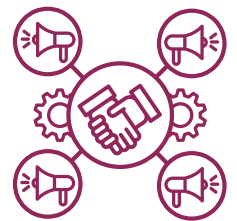
KAHUAOLA

Kahua is the foundation upon which Ola – life, health, and well-being – blossoms. With acknowledgement that there is an affordability crisis in higher education Kahuaola frames Hawai'i CC as an accessible and viable option for any local resident and encourages support for students to strengthen their foundation so that they may thrive and persist in college. With Kahuaola as the central unit for Basic Needs, the vision is to inform Hawai'i CC personnel and students about these resources to enhance the student journey. This center serves as a hub between community resources and the Hawai'i CC kauhale.



PARTNERSHIPS

Internal and external partnerships are essential for the success of basic needs initiatives. Together campus and community partners bring resources and programs directly to students. Partnerships throughout Hawai'i CC units, the UH system, and our local community ensure that Hawai'i CC continues to be a resource for Hawai'i island.



SUSTAINABILITY

Sustainable funding for basic needs staff and resources for students is critical. Since the initial opening in 2023, increasing awareness about Kahuaola has been important so that we can venture into how to make this unit truly sustainable as it is a much needed resource. Hawai'i CC continues to look at possible funding sources to ensure sustained growth and longevity for this center.



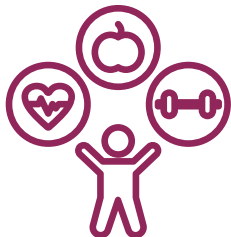
CURRENT PROGRAMS

.....

DIRECT SERVICES

Kahuaola Basic Needs Center offers a food pantry, hygiene products, application assistance for financial resources and referrals to community support programs. The center runs informative events that help to destigmatize basic needs resources. Kahuaola Student Navigators help to outreach and case manage. A monthly drive-through food distribution is offered in collaboration with Hawai'i CC Hui Ohana and The Food Basket. FAFSA support is available through the Financial Aid office and the Counseling, Advising, and Support Services Center. Additional case management for veterans, former foster youth, and formerly incarcerated students is available through the Special Populations Counselor. Case management with wrap-around support for eligible student groups is available through the following programs:

- Ēlama and Hilo One (13th Year Program) income-based for first year students
- HINET Ho'ōla 'Ike in collaboration with the State of Hawai'i Department of Human Services
- SNAP based for students in workforce development programs, and
- HawaiiCC TRIO Support Services Program; first generation, low-income, and students with documented disabilities.



PHYSICAL & MENTAL HEALTH SERVICES

All students have access to personal counseling via the Mental Wellness Program. Students with disabilities can receive accommodations and support via Hā'awi Kōkua - Disability Services. Childcare is available for a fee to student parents through the Hawai'i Community College Children's Center.

CULTIVATING PERSONAL CONNECTIONS

The committed faculty, staff, lecturers, and community members of the Hawai'i CC Kauhale make a practice of getting to know students and their fundamental needs. They often create lasting relationships that stem from a simple walk-in, phone call, or academic counseling session. They regularly offer ad hoc support and advice related to applications, finances, goal setting, work, and life. Ad hoc food drives and informational outreach events often take place via student clubs and human services courses.

EMERGENCY AID

Hawai'i CC offers emergency aid as available via temporary funds such as A Hua Maila. Outreach occurs via campus faculty, staff, and Kahuaola Basic Needs Center. SNAP outreach and the HINET Ho'ōla 'Ike are also offered through Kahuaola Basic Needs Center. Additional aid outreach occurs via campus-wide emails and texts as well as through basic needs course syllabi statements.

IMPLEMENTATION PLAN

PRIORITY 1: STAFFING & INSTITUTIONAL POLICY

SPRING 2024	FALL 2024	SPRING 2025	FALL 2025	SPRING 2026	FALL 2026
Align Kahuaola Basic Needs Center (KBNC) outcomes and measurements with its oversight unit; Counseling Advising and Student Services Center (CASSC).	Align Kahuaola Basic Needs Center (KBNC) outcomes and measurements with Hawai'i CC Strategic Directions and ILOs.	Assess KBNC services to ensure alignment with CASSC and Hawai'i CC.			
Staff KBNC with Student Navigators and interns. Create a student position for Pāalamanui campus in Kona.	Discuss/Increase Institutional Commitment; staff and student worker funding	Request Student Government letter of support	Request Letters of Support/Recommendations from community partners; Food Basket, etc.	Transition extramurally funded programming and activities to general funded account	Institutional Commitment; staff and student worker funding
Disseminate annual Spring Basic Needs Survey	Implement action plan and direction for Basic Needs services (based upon Spring Basic Needs Survey review in Summer 2024)	Disseminate annual Spring Basic Needs Survey	Implement action plan and direction for Basic Needs services (based upon Spring Basic Needs Survey review in Summer 2025)	Disseminate annual Spring Basic Needs Survey	Implement action plan and direction for Basic Needs services (based upon Spring Basic Needs Survey review in Summer 2026)
Ongoing search for extramural/grants funding for KBNC staff	Discuss/Increase support for a general funded basic needs staff position; ongoing search for extramural funding/grants for KBNC staff	Request Letter of Support from Student Government in favor of a general funded basic needs staff position; ongoing search for extramural funding/grants for KBNC staff	Request Letters of Support/Recommendations from community partners; Food Basket, etc. in favor of a Hawai'i CC general funded basic needs staff position; ongoing search for extramural funding for KBNC staff	Transition extramurally funded positions to general funded; ongoing search for extramural funding/grants for additional KBNC development activities and programming	General Funded Staff Member; ongoing search for extramural funding/grants for additional KBNC development activities and programming

PRIORITY 2: PARTNERSHIPS, OUTREACH TO STUDENTS

SPRING 2024	FALL 2024	SPRING 2025	FALL 2025	SPRING 2026	FALL 2026
<p>Continue discussions and outreach for community and UH partnerships; initiate discussions with Hawai'i Diaper Bank to offer diapers and other supports to students with children; create template to acknowledge and thank community partners for ongoing support (KBNC, SG President and VCSA/Chancellor sign)</p>	<p>Continue discussions and outreach for community and UH partnerships</p>	<p>Continue discussions and outreach for community and UH partnerships; send thank you memo to community partners for ongoing support (KBNC, SG President and VCSA/Chancellor sign)</p>	<p>Continue discussions and outreach for community and UH partnerships</p>	<p>Continue discussions and outreach for community and UH partnerships; send thank you memo to community partners for ongoing support (KBNC, SG President and VCSA/Chancellor sign)</p>	<p>Continue discussions and outreach for community and UH partnerships</p>
<p>Initiate discussions for partnership with other academic departments; Partner with Agriculture Department to provide produce to food pantry and monthly food distributions.</p>	<p>Plan events and activities with Culinary program; ongoing support of Kauhale garden in partnership with I Ola Hāloa Center for Hawai'i Life Styles; Initiate discussions for partnership with other academic departments</p>	<p>Plan events and activities with Culinary and I Ola Hāloa programs; discussions about expanding Kauhale garden at Manono Campus; Initiate discussions for partnership with other academic departments</p>	<p>Initiate discussions for partnership with other academic departments</p>		
<p>Increase Hawai'i CC personnel awareness about Basic Needs and KBNC; review and update BN syllabus statement</p>	<p>Finalize BN syllabus statement; Meet with VCAA and Academic Departments</p>	<p>Implement BN syllabus statement; continue staff/faculty outreach. Identify advocates for BN related programming and events</p>	<p>Continue recruiting; increase staff/faculty advocates for BN related programming and events</p>	<p>Continue recruiting; increase advocates for BN related programming and events; expand momentum (additional events and programming; newsletters, etc)</p>	<p>Continue recruiting; increase advocates for BN related programming and events; expand momentum (additional events and programming; newsletters, etc)</p>

PRIORITY 3: DIRECT SERVICES

SPRING 2024	FALL 2024	SPRING 2025	FALL 2025	SPRING 2026	FALL 2026
<p>Provide access to BN Food Pantry; help facilitate monthly food distributions</p>					
<p>Provide additional resources to students. Including but not limited to: Basic Needs Workshops, Implement direct basic needs outreach to students in need with Social Work Intern; Provide period products on campus and support efforts to institutionalize restroom dispensers; Provide SNAP outreach and application assistance, Offer Financial Wellness programming: Financial Reality Fair and Financial Workshops; Conduct scholarship outreach and increase number of UH-Common Scholarship applications submitted.</p>					
<p>Ongoing discussions on additional direct services for students such as housing and family programs, increased fresh produce, healthy food, and donations</p>					