



UNIVERSITY of HAWAII
HONOLULU COMMUNITY COLLEGE
Ke Kulanui Kaiāulu 'o Honolulu

HONOLULU COMMUNITY COLLEGE

.....

CAMPUS PILLARS

.....

PARTNERSHIPS

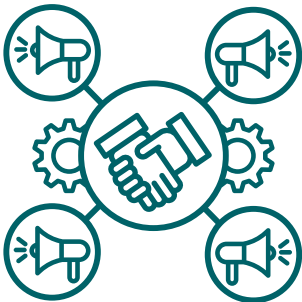
Providing help for those in need. Establish a central area students can go to for SBN support. Campus programs working together to establish a stronger SBN support system on campus. Build community partnerships to support campus efforts.

HEALTHY AND THRIVING CAMPUS COMMUNITY

When students feel a sense of belonging, they are more likely to engage in class and campus activities, leading to higher retention rates and a greater likelihood of academic success. Promote student activities.

STUDENT SUCCESS AND COMPLETION

- Provide innovative, personalized, and caring teaching and student support services.
- Establish an educational environment that builds a sense of belonging and values building relationships amongst students and with faculty and staff.
- Encourage community involvement, both on and off campus.
- Promote fundraising and grant opportunities to provide more monetary support for SBN.



CURRENT PROGRAMS

.....

SPRING & FALL 2021 BASIC NEEDS DRIVE SPONSORED BY COSA

Committee on Student Affairs worked on collecting food donations to be available to students at the counseling office.

DISASTER PREPAREDNESS SPONSORED BY STUDENT LIFE & DEVELOPMENT (SLD)

SLD provided disaster preparedness kits which included emergency food supplies.

STUDENT LEADER SPONSORED FOOD GIFT ASSISTANCE CARD FOR STUDENTS WHO SELF-IDENTIFIED

SLD provided food gift assistance cards to students during the pandemic.

EMERGENCY FUNDING SUPPORTED BY HEERF - STUDENT SERVICES

Campus opened the student emergency fund application for students to request emergency aid.

ALOHA HARVEST (PRIOR TO COVID) AND DURING COVID IN FALL 2022

Aloha Harvest provided monthly food distribution to students.

INFORMAL TRIO MEAL AND CLOTHING PROVISION

TRIO has been supporting their students' food insecurities by offering free meals throughout the semester.

SLD FOOD EVENTS

Majority of SLD events have opportunities for student to pick up free food.

HULILI KE KUKUI (NATIVE HAWAIIAN CENTER) SNACK TABLE FOR STUDENTS

HKK has a dedicated area for students to grab food items.

MA'I MOVEMENT DISTRIBUTION OF PRODUCTS 2023

CARE has worked with Mai Movement to provide free monthly kits.

ACADEMIC COUNSELING SUPPORTED BASIC NEEDS PRODUCTS

Counseling provided free food items to students during AY21-22. These items were generously donated by faculty and staff.



PRIORITIES & BEST PRACTICES

.....

1. COORDINATE WITH PROGRAMS ON CAMPUS TO SUPPORT SBN
2. DEVELOP COMMUNICATION PLAN FOR STUDENTS
3. PLACE SBN REP AS A STANDING MEMBER ON COSA OR SUSTAIN

PRIORITY 1: COORDINATE WITH PROGRAMS ON CAMPUS TO SUPPORT SBN

SPRING 2024	FALL 2024	SPRING 2025	FALL 2025	SPRING 2026	FALL 2026
Coordinate with CARE, TRIO, Student Life and Development, Hulili Ke Kukui, and other programs to restart Aloha Harvest	Coordinate food drives for all students on and off campus	Promote SBN office as a support service for SBN.			
Work with Student Affairs to address SBN and possibly have a rep on this committee	Support any SBN issues or topics that are brought up at committee meetings.				
Identify community partnerships	Work with community partners to build programming initiatives	Continue to build community partnerships as well as showcase partnerships.			
Establish office for SBN	Build programming initiatives to support students' basic needs	Promote SBN office as a support service for SBN.			

PRIORITY 2: PARTNERSHIPS, OUTREACH TO STUDENTS

SPRING 2024	FALL 2024	SPRING 2025	FALL 2025	SPRING 2026	FALL 2026
Create communication materials to inform and promote SBN with students, faculty, and staff	Develop videos on various resources, referral guides, and outreach materials	Roll out videos, referral guides, and outreach materials	Maintain materials (videos, referrals, and outreach)		
Encourage Honolulu CC to add SBN in signature line	Create communication materials to inform and promote SBN with students, faculty, and staff	Communication/promotion of SBN			
Work with onboarding initiatives to include information on SBN to incoming students	Showcase resources on college website	Continue to update and showcase resources and maintain website			

PRIORITY 3: SUSTAIN SBN ON CAMPUS - DONATION, BUDGET, EMERGENCY FUNDS, ETC.

SPRING 2024	FALL 2024	SPRING 2025	FALL 2025	SPRING 2026	FALL 2026
Work with Administration to establish a donation account through UH Foundation	Create programming to promote donation among campus community	Establish donation through UH Foundation	Continue with donation/fundraising		