

# University of Hawai'i Informational Briefing

House Higher Education and Technology Committee

December 17, 2020



# University of Hawai'i COVID-19 Response

Spring 2020

---

- Pivoted online immediately and effectively after Spring Break and successfully completed the spring semester, closed campuses to public
- UH Expertise and capability supported state response
- Students, faculty and staff supported the community
- UH Foundation created Urgent Student Relief Fund to address financial hardship caused by the pandemic
- UH/P20 created “Next Steps to Your Future” for the HS Class of 2020

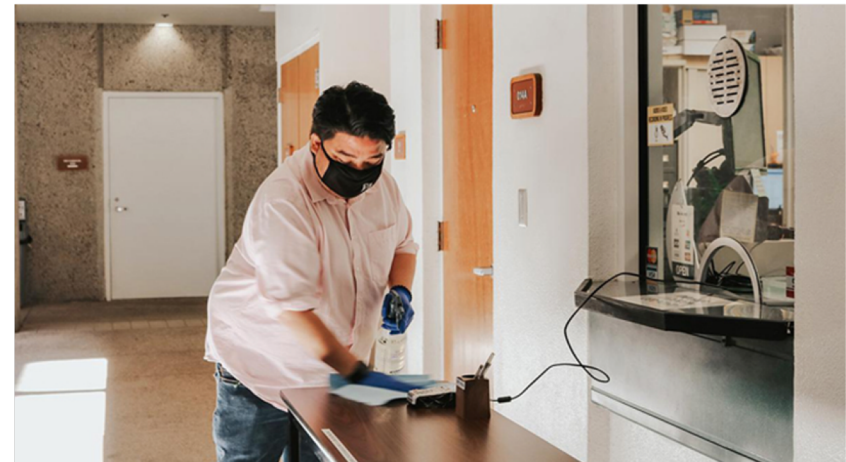
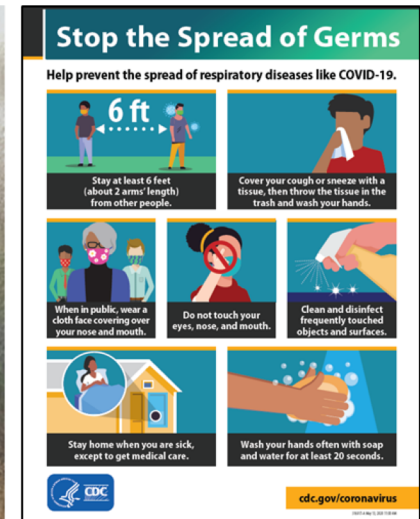


UNIVERSITY OF HAWAII

# University of Hawai'i COVID-19 Response

## Guidelines - Some Highlights

- Identifies personal safety practices
- Mandates the wearing of face coverings and use of a daily check-in app when coming to campus
- Establishes communication and cleaning protocols for COVID-19 cases on campus
- Sets forth guidance for on-campus space usage
- Places limitations and restrictions on student housing, food and student services, and gatherings



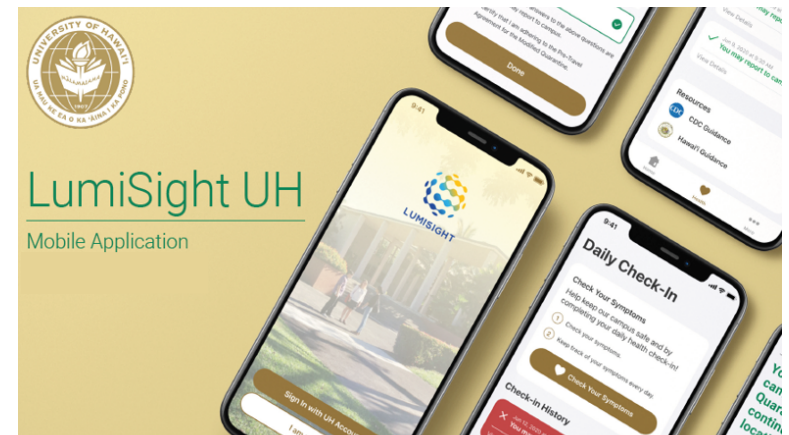
UNIVERSITY OF HAWAII

# In-Person Learning Environments

## Fall 2020 Classes

---

- In-person classes held only for those that require a **physical presence**
- Students requested to take online courses
- Seating/desks were spaced at least 6 feet apart, turned in same direction
- Seats/furniture that should not be used blocked off and/or clearly marked
- Hand sanitizer and wipes stations were placed in every classroom and teaching lab
- All people are required to wear face masks while on campus
- Signs on COVID-19 prevention posted
- Public spaces cleaned/disinfected daily; high-touch surfaces in public areas more frequently
- Self-screening platform “LumiSight” developed by DataHouse Consulting



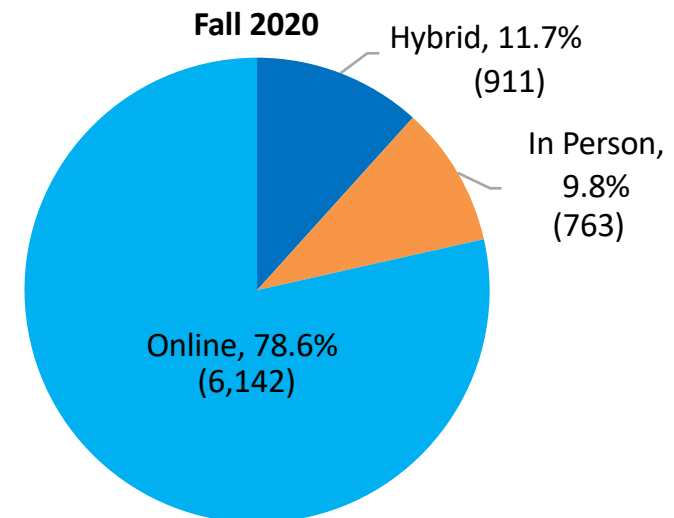
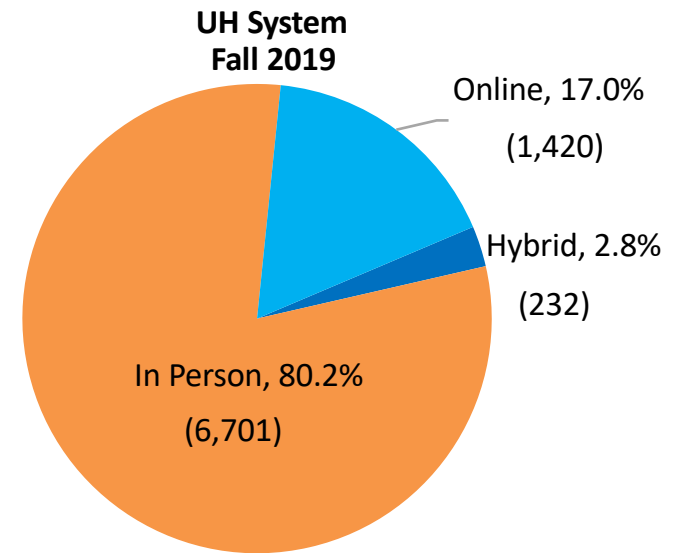


# Online Learning Environments

## IT Upgrades

- Provided faculty development opportunities over the summer
- Supplemented technology in pre-COVID tech-enabled classrooms:
- Added supplementary wifi to support higher loads/usage
- Established pool of loaner laptops and hotspots
- Increased Zoom license pool
- Upgraded servers/storage
- Implemented security upgrades (enterprise firewalls, VPN services, etc.) to support remote connections

Number of Hybrid, In Person, and Online Classes



# Student Housing

- Residential capacity reduced to 45% to adhere to social distancing requirements
- University COVID-19 guidelines strictly enforced including daily health check screenings, mandatory face coverings, and safe physically distancing
- No guests allowed in student housing and building common areas were closed or restricted
- Out-of-state students required to follow state travel guidelines or participate in state approved UH Modified Quarantine Program
- Student residents who tested positive for COVID-19 or identified as a close contact quarantined and cared for at local hotel





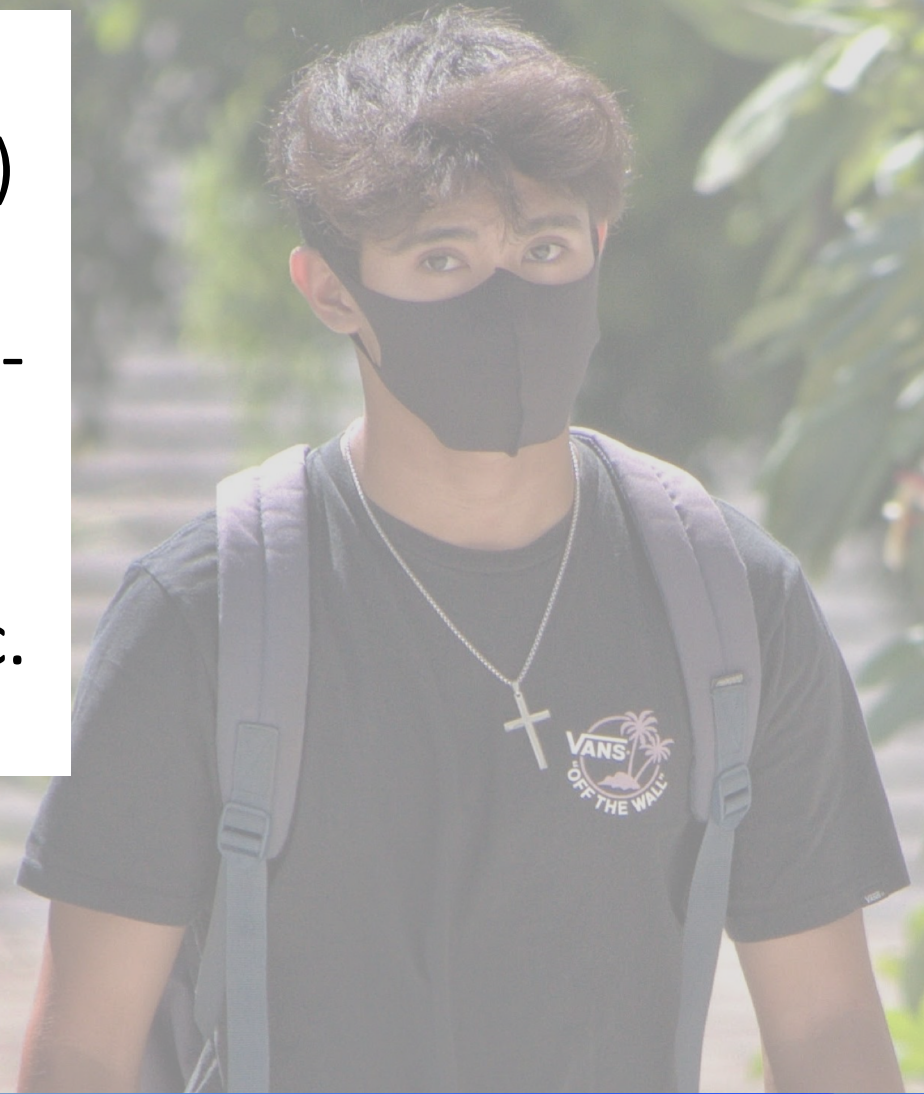
# Athletics

- COVID-19 guidelines strictly followed at all athletics related activities (practices, workouts, meetings, etc.) including daily health screenings, mandatory face coverings and safe physically distancing. Activities also moved outdoors where possible
- Additional cleaning/disinfecting of spaces and workout equipment, which was wiped down after every use
- UH athletes in active competition are tested weekly, in accordance with NCAA and conference guidelines
- No athletic events on campus from mid March until December 11
- The first athletic event on campus, a UH basketball game, followed standard COVID-19 guidelines and held with no fans
- Student-athletes had the option opt out with no effect on their scholarship status



# University of Hawai'i COVID-19 Response – Our Results

Data posted daily – As of this morning (12/17/2020) there have been only **68** University-affiliated COVID-19 cases across all 10 campuses since the beginning of the pandemic.





# Fall 2020 UH System Headcount Enrollment

## UH Not As Impacted as National Trends

Despite the pandemic, enrollment goals were surpassed in some cases and slightly below projections in others.

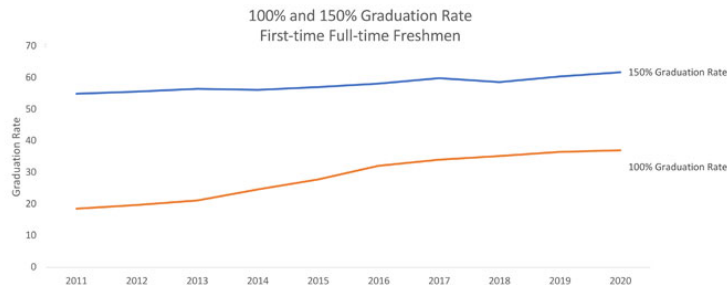
UH Unit	Fall 2019 Actual	Fall 2020 Actual	Percent Change	Fall 2020 Projected	Actual Less Projected (Shortfall)	Shortfall as a Percent of Projected	Fall 2021 Projected
UH System	49,977	49,594	-0.8%	49,757	-163	-0.3%	49,407
UH Mānoa	17,490	18,025	3.1%	17,482	543	3.1%	18,149
UH Hilo	3,372	3,165	-6.1%	3,348	-183	-5.5%	3,103
UH West O'ahu	3,049	3,168	3.9%	3,019	149	4.9%	3,189
UH Community Colleges	26,066	25,236	-3.2%	25,908	-672	-2.6%	24,966

The Fall 2020 projection was made in November 2019, Fall 2020 actual was measured at census in September 2020 and the projection for Fall 2021 was made in November 2020.

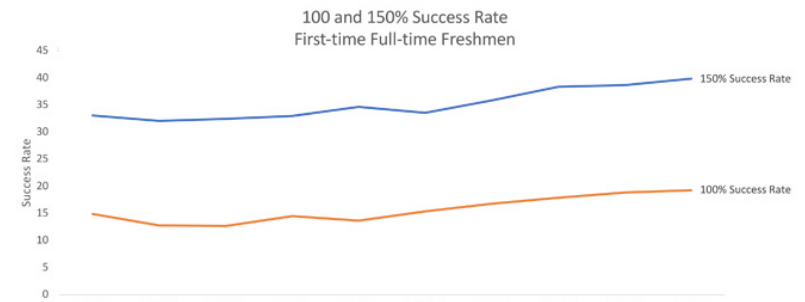
# Graduation Rate Improvements

- 8 UH campuses = increases in the 150% graduation/success rate
- 7 campuses = increases in their 100% (on-time) graduation rates
- 5 campuses = highest resident freshmen retention rates since 2014

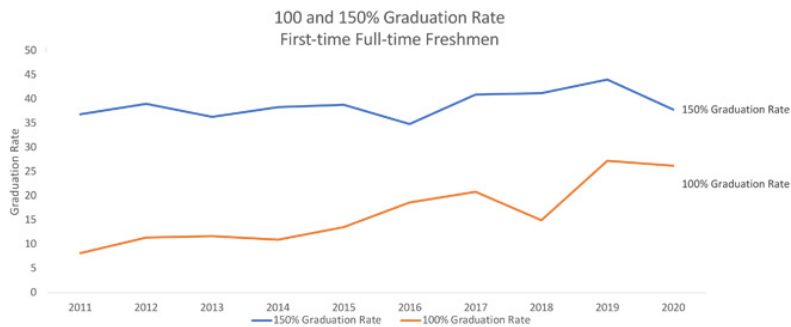
## UH Mānoa



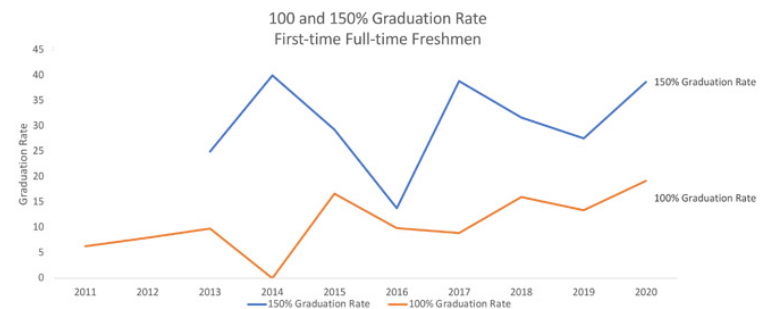
## UH Community Colleges



## UH Hilo



## UH West O'ahu



## Fiscal Update - University Actions

---

- UH was the first state organization to implement a freeze on significant expenditures.
- Working on a retirement incentive program for faculty
- Pay reductions for all Exec/Managerial Employees of at least 9.23%
- Policy mandate from CFO for cash preservation
- BOR-approved operating budget for FY21 preserves all UH reserves for the more difficult years ahead
- BOR-approved Biennium Budget lays out multi-year approach to upcoming difficult years
- Initial BOR-approved Biennium Budget for FY22-24 includes no new operating budget requests, requests continuing support for high-priority CIP projects and renewal/improvement/modernization



# Fiscal Update - CARES

---

## Summary of CARES Act HEERF Funding (FY 2020 – 2021)

*\$44,930,415* distributed in Three Tranches

- Tranche 1 - \$12,009,865 for Student Grants

Emergency financial aid for students

- Tranche 2 - \$12,009,865 for Institutional Support

For costs associated with the changes to the delivery of instruction. Can also be used for student grants

- Tranche 3 \$20,910,685 for Minority-Serving Institutions

To defray lost revenue and reimburse for pandemic-related expenses

---

*\$11 million* in support from State CARES CRF Fund for direct COVID-19 expenses

---

Additional *\$31 million* in CARES and funding from other government agencies including:

- Reimagine Workforce (\$13.3m)
- O'ahu Back to Work (\$3m)
- Contact Tracing Training (\$2.5m)
- Tropical Medicine Clinical Lab (\$3.9m)





# Fiscal Update – Preparing for the Biennium Ahead

---

- Working to implement furlough program in accord with Governor's directives
- Actively working to identify opportunities for rightsizing across UH with emphasis on priorities in BOR-approved Biennium Budget Policy Paper
- Will prepare for a revised Biennium Budget plan based on Governor's budget to be released next week



# Our Path Forward Must be Grounded in our Vision for Hawai'i and UH

Hawai'i is a special place where diverse people and communities live, work, learn and play together in a sustainable manner. Hawai'i's economy is vibrant and globally competitive, characterized by engaging living-wage jobs. Inspired by its host culture, Hawai'i treasures and protects its amazing environment as it promotes a high quality of life for all its people.

The University of Hawai'i system is the single most important contributor to the future of Hawai'i. The people of Hawai'i appreciate the excellence throughout UH, understand its value to the state and show their pride in their university system. UH campuses are recognized for their quality and value and are destinations of choice within Hawai'i and beyond. The UH System is the premier integrated higher education system in the country.

Integrated Academic and Facilities Plan for the UH System  
Approved by the UH Board of Regents, April 20, 2017



UNIVERSITY OF HAWAII

# Parking Lot Slides

---



# What Does Hawai'i Need Most from UH: Priorities for Recovery and Beyond

- Hawai'i needs a more educated citizenry that addresses our challenges and opportunities
- Hawai'i needs more of our residents prepared and qualified to fill the jobs Hawai'i needs
- Hawai'i needs to grow healthy new economic sectors and develop new approaches to existing sectors
- UH research and innovation must become more substantial economic and intellectual drivers

*Clear priorities grounded in what Hawai'i needs must guide our discussions, consultation and decision-making in the difficult days ahead.*





# UH Must Engage More Hawai'i Residents in Post-Secondary Education and Training

- Post-secondary education is the most powerful enabler of social and economic mobility with inter-generational positive impacts. Holders of a post-secondary credential:
  - Earn more, are healthier, live longer, have children more likely to attend college
  - Are less likely to become unemployed in a recession and are faster to be re-employed during recovery
  - Pay more taxes, vote more, volunteer more, less likely to draw on social services, less likely to be incarcerated
- The best estimate is that 70% of jobs created will require some post-secondary education
  - Right now, that applies to just 48% of working age adults in Hawai'i
- Regardless of major, a broad educational foundation equips students to thrive as engaged citizens and lifelong learners in an uncertain future applying their essential skills and abilities including communication, critical thinking, empathy, cultural competence, creativity and can-do spirit

*All of Hawai'i benefits from an educated and engaged citizenry*



# UH Must Educate More Hawai'i Residents for Living Wage Hawai'i Jobs

- Education
  - Teachers, teachers, teachers – via multiple pathways
- Health Care & Social Welfare
  - Doctors, nurses, allied health professions, social workers, public health workers, psychologists, counselors, physical therapists...
- Construction, Design & the Built Environment
  - Skilled labor, architects & engineers focused on sustainable and resilient structures for Hawai'i

*When we educate our own residents to fill needed jobs in our community, especially living-wage jobs, we do better for our people and we do better for our employers.*



# UH Must Help Grow New Economic Sectors and Develop New Approaches to Current Sectors

- Computer Science & Engineering
  - Cybersecurity, Data Science, Artificial Intelligence / Machine Learning
  - Hawai'i residents with these skills can telework for employers anywhere
- Creative Media Industries
  - Film / Music / Video, Production, Gaming, Esports
- Climate Change, Energy, Resilience & Conservation
  - Sea level rise, coral reef health, weather impacts, renewable energy generation, microgrids, disaster risk assessment, resilience
  - Protection and restoration of native environments
- Food, Agriculture, Aquaculture
  - Need to avoid either/or approach to local food production and high-value products; We need both!
- Sustainable Tourism
  - Reduce numbers and impact on infrastructure, environment and community
  - Medical tourism, edutourism, ecotourism, culinary tourism, cultural tourism, voluntourism increase positive engagement with, and living wage jobs for, residents

*There is no single silver bullet that can replace our shattered 2019 tourism economy. These areas represent substantive opportunities where Hawai'i has competitive advantages and UH has recognized strength and opportunity to excel globally.*



# UH Must Strengthen its Research Enterprise as a Major Economic and Intellectual Driver of Innovation

- Extramural funding over \$450m during FY20, mostly federal
  - Thousands of directly created living wage jobs
  - Positive economic impacts multiply throughout the islands
- Need to ensure continued high performance in areas of strength
  - Ocean, earth & atmospheric sciences;
  - Astronomy & space sciences;
  - Environmental microbiology;
  - Study of Asia and the Pacific, Hawai'i and its people
  - Climate change and resilience;
  - Energy;
  - Disaster management;
- Need to build stronger research capacity in areas of opportunity
  - Health sciences and disparities;
  - Agri/Aquaculture;
  - Computer Science & Engineering
  - Pacific Engagement
- Need to increase community impacts: startups, jobs, investment

**No community has developed into an economic powerhouse without the engagement of a strong research university.**

