

# Hawai'i 2.0 – Recovery in Action

## *Pivot to Digital Coordination Background*

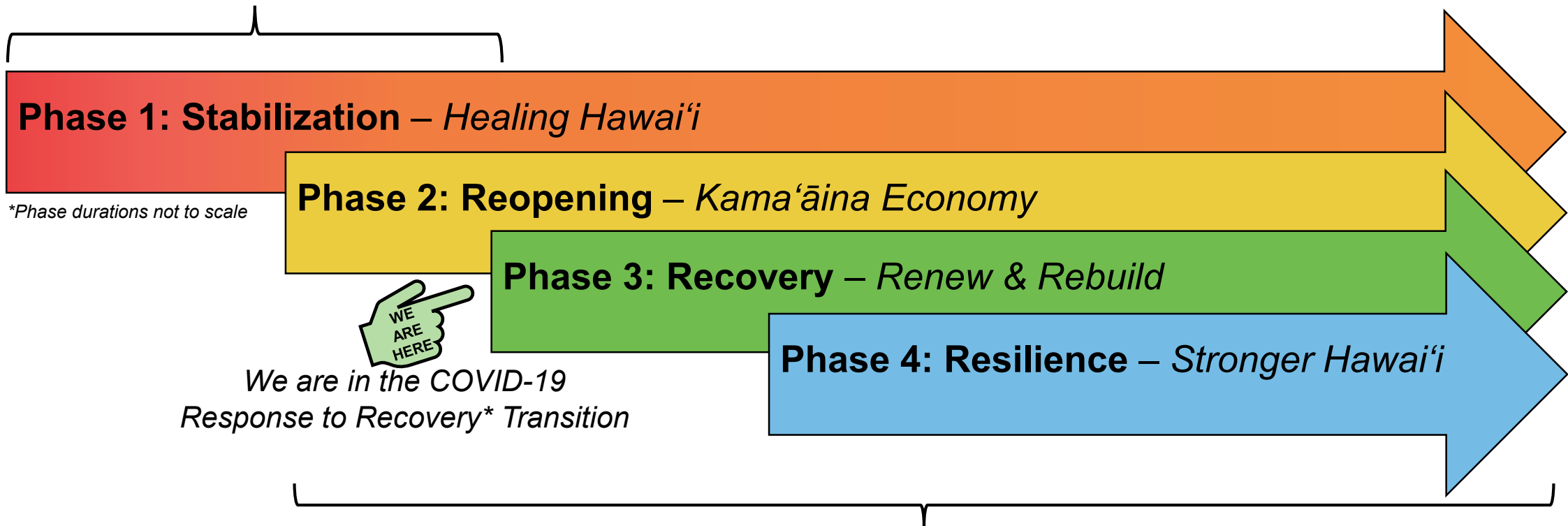
*August 5, 2021*



# Hawai'i 2.0 Planning & Operating Framework

*Hawai'i 2.0 is a **program of action** designed to **reboot and upgrade Hawai'i's economy** in parallel with pandemic response*

COVID-19 Emergency Response



Reboot and Upgrade Hawai'i's Economy

# Hawai'i 2.0 Foundation: *Pivot to Digital*

*Hawai'i 2.0 embraces the digital economy as a foundational, knowledge-based strategy for Hawai'i's sustainable economic recovery and resilience*



## Hardware

- Laptops
- Mobile Devices



## Access

- Connectivity at home and/or in public spaces



## Equity

- Literacy
- Affordability

*Full Spectrum of Support Services resulting in:*

### **BOTH**

- ✓ Pathways to digital work opportunities in Hawai'i

### **AND**

- ✓ Tech-enablement for "analog" work opportunities



## Education & Workforce Development

Provide Hawai'i residents with access to education and training opportunities that support continued reopening and new work opportunities in high-need and emerging sectors.

## Pivot to Digital

Ensure that every Hawai'i resident has access to connectivity and devices, literacy, and devices to empower livelihood via participation in digital and analog work opportunities.

## Regenerative Tourism

Implement destination management strategies and systems that benefit Hawai'i's people, culture, and natural resources, while mitigating visitor industry impacts.

## Housing 2.0

Advance strategic projects, policies, and infrastructure that help to increase supply and lower Hawai'i's housing costs for kama'āina.

## Sustainable Hawai'i

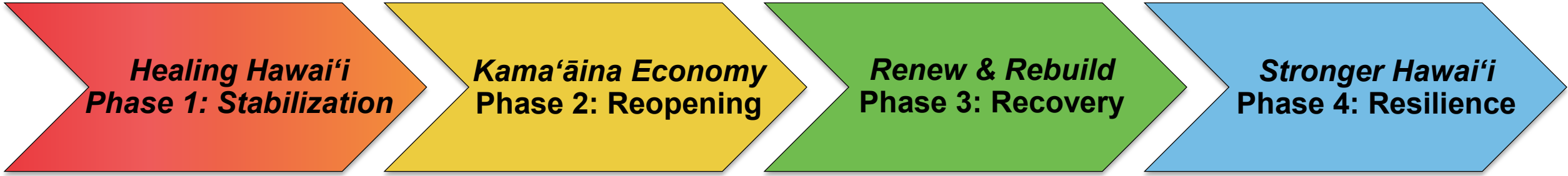
Strengthen Hawai'i's essential lifelines through innovation in agriculture and food production, green energy, and water reuse and conservation.

## Creative & Tech Innovation

Support high-tech, entrepreneurial capacity-building, financing, and spaces for production and export of Hawai'i's creative and intellectual property.<sup>4</sup>

# Pivot to Digital: *Work Completed & On Deck*

\*Phase durations not to scale



## **Healing Hawai'i Phase 1: Stabilization**

- ✓ Broadband Strategic Plan
- ✓ Broadband Hui (est. Mar 2020)
- ✓ Keep Americans Connected
- ✓ WiFi on Wheels
- ✓ Kuauli Community Initiative
- ✓ Telehealth Service for homeless communities on Hawai'i Island

## **Kama'āina Economy Phase 2: Reopening**

- ✓ Digital Equity Declaration
- ✓ HTDC/TRUE Workforce Recovery
- ✓ Integrate with Telehealth Hui
- ✓ FEMA/USDA Funders Table
- ✓ Establish Broadband & Digital Equity Office (HB1191)

## **Renew & Rebuild Phase 3: Recovery**

- ✓ Emergency Broadband Benefit
- ✓ Workforce Resiliency Initiative
- ✓ DBEDT Refurbished Hardware
- ✓ Digital Assessment Tool
- ❑ Libraries Modernization
- ❑ HDOT Wireless Mesh Pilot
- ❑ Digital Equity Roadmap
- ❑ Subcom Marine Depot
- ❑ Broadband Infrastructure Program
- ❑ Pu'uhonua o Waianae/Waimanalo
- ❑ Kaua'i Neighborhood Centers
- ❑ Emergency Connectivity Fund
- ❑ Hawaiian Homelands Connectivity

## **Stronger Hawai'i Phase 4: Resilience**

- ❑ Public Housing Connectivity
- ❑ Public Buildings Connectivity
- ❑ Broadband Infra. Master Plan
- ❑ Cable Landing Stations
- ❑ 'State of Digital Literacy' by 2024
- ❑ Connecting Minority Communities

# Recovery Phase: Near-term Projects



Hardware






Access



Equity

	← Libraries Modernization →	
	← Broadband Infrastructure Program →	
	← Broadband Infrastructure Master Plan →	
	← Digital Equity Roadmap →	
← Emergency Broadband Benefit →		Digital Assessment Tool
← Emergency Connectivity Fund →		DBEDT Refurbished Hardware
DBEDT Refurbished Hardware	← HDOT Wireless Mesh Pilot →	
	← Subcom Marine Depot →	
	← Kaua'i Neighborhood Centers →	
	← Hawaiian Homelands →	
	← Pu'uhonua o Waianae →	6



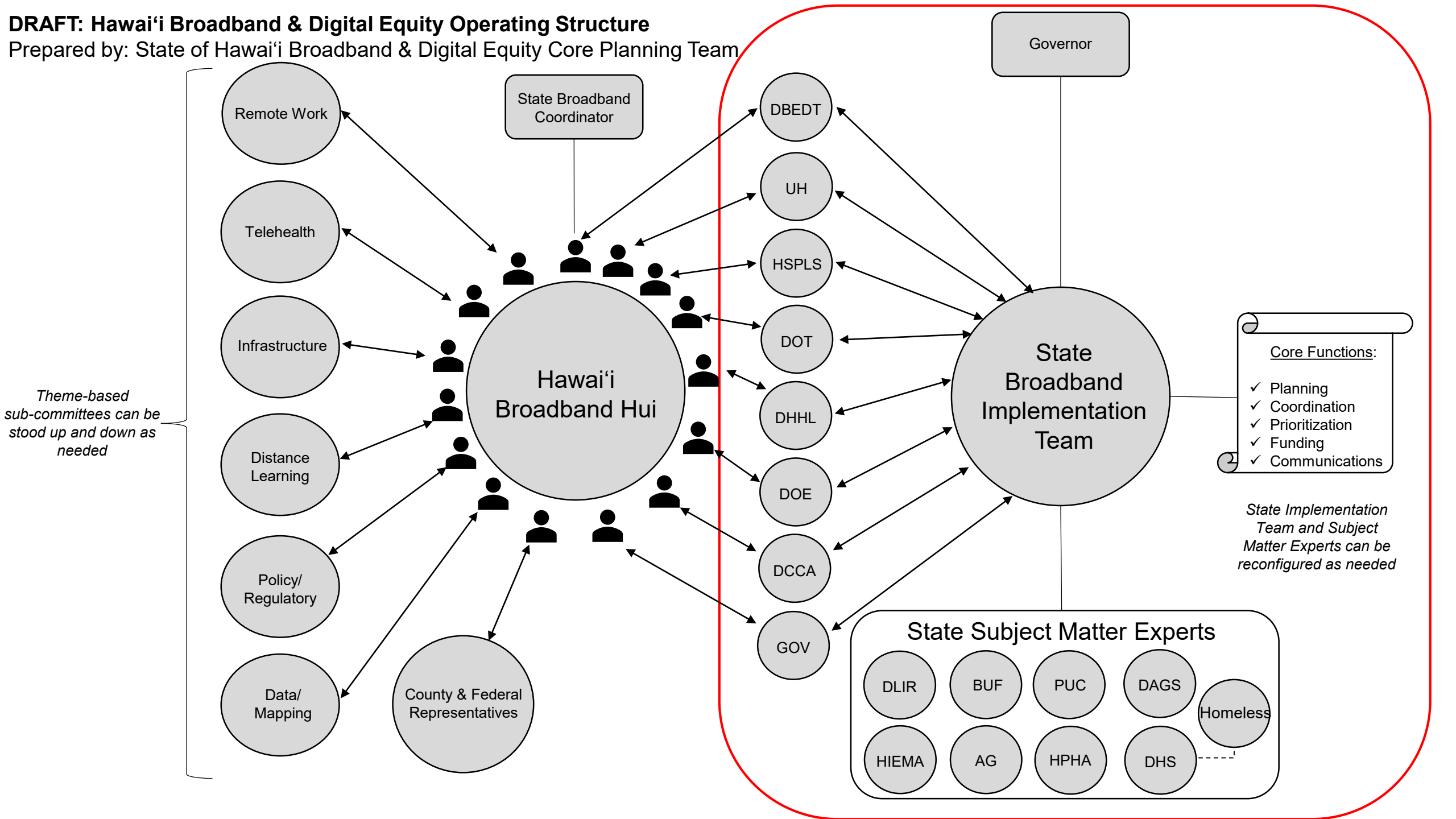
 Hardware	 Access	 Equity
← Broadband Infrastructure Master Plan (Implementation) →		
	← Public Housing →	
	← Public Buildings →	
← Cable Landing Stations →		
← 'State of Digital Literacy' by 2024 →		
← Connecting Minority Communities →		

# Broadband & Digital Equity Coordination Background

- The *Broadband Hui* was established by DBEDT's Broadband Strategic Officer in March 2020 as a forum for *community-based coordination and action* toward the achievement of digital equity for all.
- In parallel, a *State of Hawai'i Broadband & Digital Equity Core Planning Team* comprised of resources from GOV, DBEDT, and HI-EMA met bi-weekly to facilitate coordination with State departments and agencies with the goal of supporting economic and community recovery.
- Broadband and digital equity themed Listening Sessions were facilitated and documented with DOE, HSPLS, and DHHL, along with recovery-themed sessions on telehealth, workforce development, K-12 public education, higher education, innovation & entrepreneurship, creative economy, and homelessness to build a state recovery common operating picture.
- In aggregate, the data gathered informed the following proposed *Hawai'i Broadband & Digital Equity Operating Structure*, which visualizes the State coordination entity identified in UH's *Discussion Paper on Broadband Opportunities for Hawai'i*



**DRAFT: Hawai'i Broadband & Digital Equity Operating Structure**  
 Prepared by: State of Hawai'i Broadband & Digital Equity Core Planning Team



*Theme-based sub-committees can be stood up and down as needed*

- Core Functions:**
- ✓ Planning
  - ✓ Coordination
  - ✓ Prioritization
  - ✓ Funding
  - ✓ Communications

*State Implementation Team and Subject Matter Experts can be reconfigured as needed*