

Office of the Vice President for Community Colleges

**DEMOGRAPHIC INFORMATION
AND ACHIEVEMENT DATA (DIAD)
(FOR USE IN THE SELF EVALUATION OF
EDUCATIONAL QUALITY AND INSTITUTIONAL
EFFECTIVENESS)**

**FIGURES AND TABLES
UHCC SYSTEM**

FALL 2010 Data

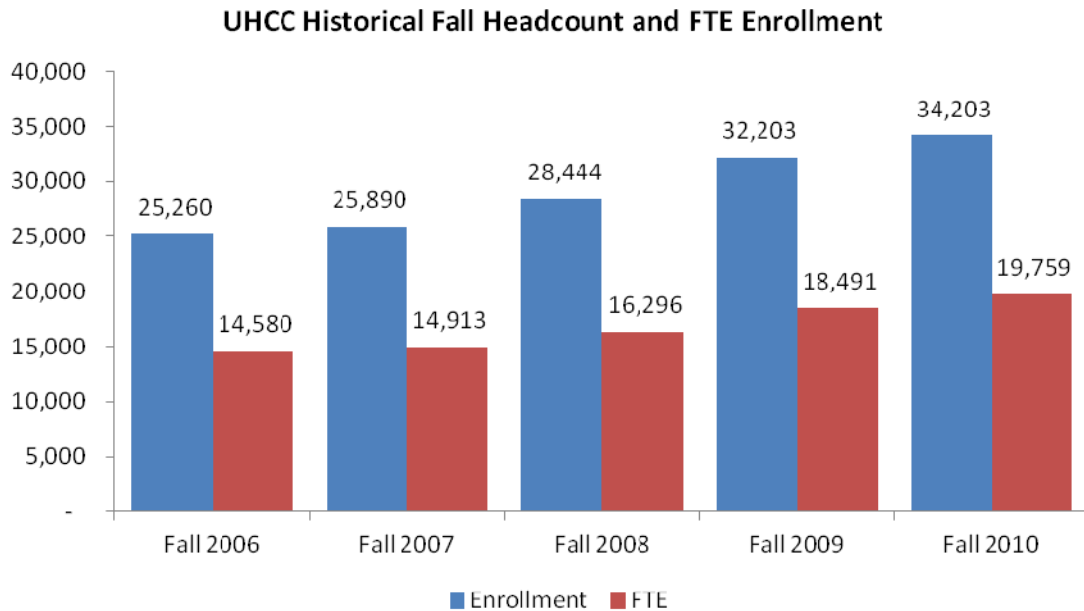
TABLE OF CONTENTS

Figures 1/1b - Historical Fall Headcoun: Full Time FTE and Full-Time and Part-Time Enrollment	1
Figure 2 - Enrollment Projections	2
Figure 3 - Going Rate High School Graduates (percentage).....	3
Figure 4 - Number High School Graduates Immediate Transition to UH Community Colleges	4
Figure 4a - Number of High School Graduates Immediate Transition to UH System by Unit.....	4
Table 1 - Enrollment by Residency for Tuition Status, Fall 2006 to Fall 2010	5
Table 2 - International Student Enrollment Fall 2010	6
Figure 5 - University Hawaii Community College System Organizational Chart.....	7
Figure 6 - State of Hawaii, Students, and Faculty Diversity	8
Figure 7 - Hawaiian/Part Hawaiian Students Enrolled University of Hawai'i System	9
Figure 8 - Where Hawaiian/Part Hawaiian Students Enroll (Fall Semester).....	9
Table 3 - Staff by Ethnicity and Gender Fall 2010.....	10
Table 4 - Full Time Faculty by Rank, Ethnicity, and Gender Fall 2010	11
Table 5 - Student Enrollment - Ethnicity and Gender Fall 2010	12
Figure 9 - Retention (Course Completion).....	13
Figure 10 - Persistence.....	14
Figure 11 - Annual Number Degrees and Certificates Awarded	15
Figure 12 - Continuing Enrollment, Transfer, and Graduation of first-time, full-time, degree-seeking students within 150 of first time enrollment.....	16
Table 6 - Transfer Numbers and Rates	17
Figure 13 - Developmental Education - Completion.....	18
Figure 13a – Developmental Education - Success in Next Course	20
Figure 14 - Employment Status	22
Figure 15 - Graduates and Leavers Job Preparation	22
Figure 16 - CSSE Benchmark Percentiles	23
Appendix A – Figure 1 Disaggregated Data	A
Appendix B - Figure 9 Disaggregated Data.....	B
Appendix C - Figure 10 Disaggregated Data.....	C
Appendix D - Figure 13a Disaggregated Data.....	D

STUDENT ENROLLMENT

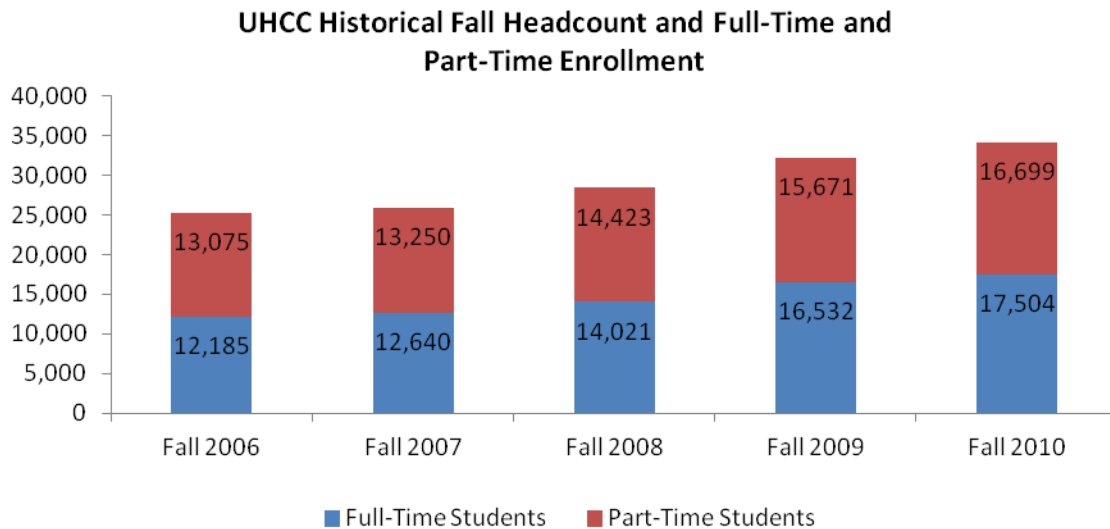
Full Time Equivalent (FTE) is defined as the total student semester hours, summed across all course enrollments in regular credit courses, divided by 15.

Figure 1 – Historical Fall Headcount and Full-Time Equivalent (FTE) Enrollment



Source: ODS

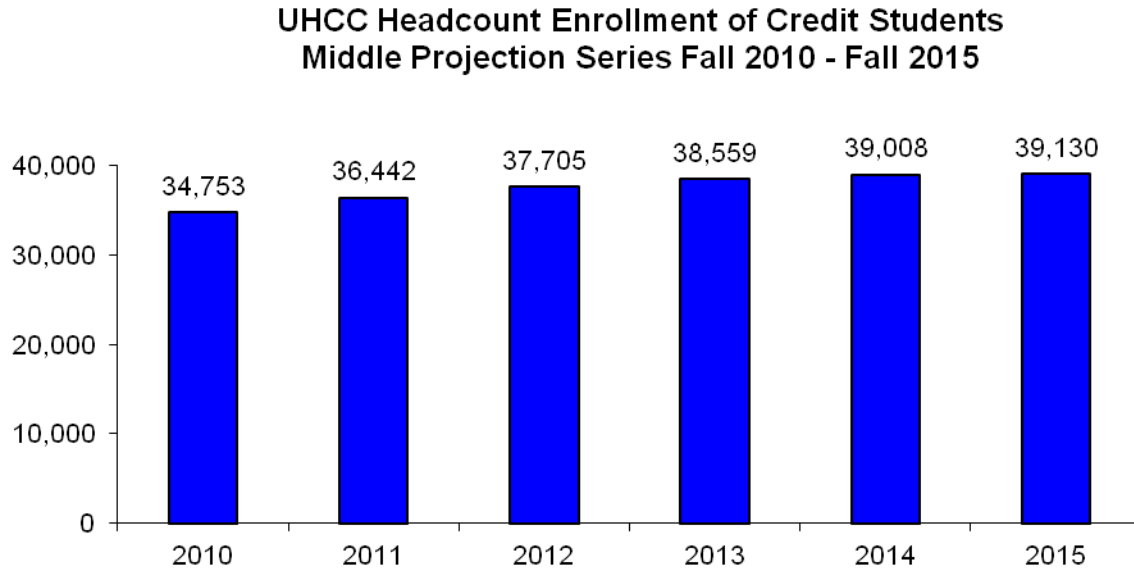
Figure 1b - Historical Fall Headcount and Full-Time and Part-Time Enrollment



Source: ODS

ENROLLMENT PROJECTIONS

Figure 2 - Enrollment Projections

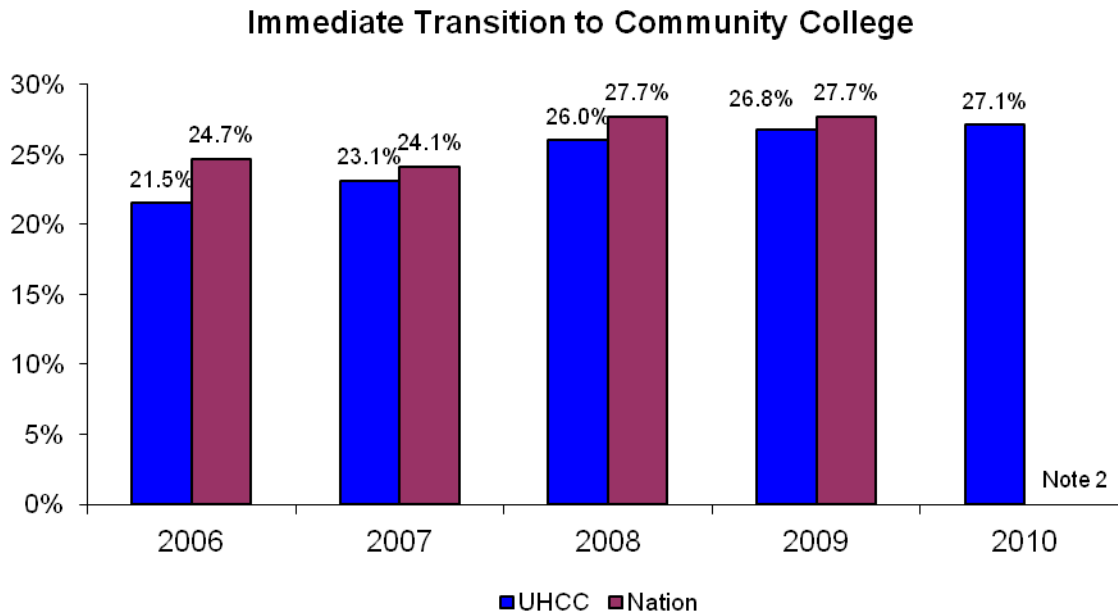


Source: MAPS – Enrollment Projections University of Hawaii Community Colleges Fall 2010 to Fall 2015, Table 1.

GOING RATE

Going Rate – Percentage Hawaii public and private June high school graduates who enroll in a community college the following fall semester

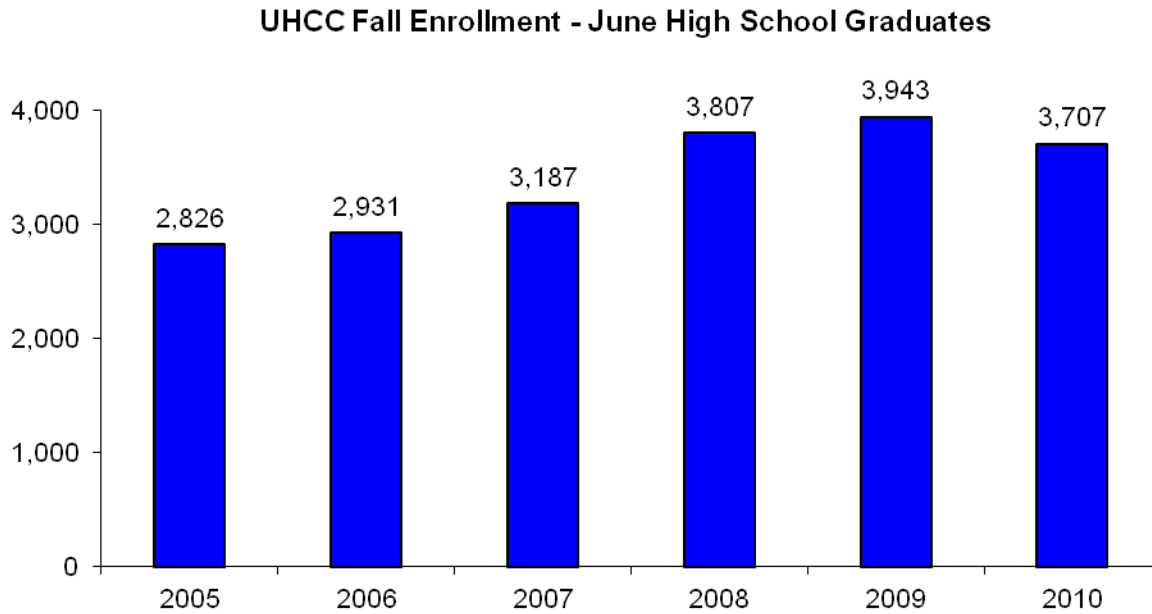
Figure 3 - Going Rate High School Graduates (percentage)



Sources:

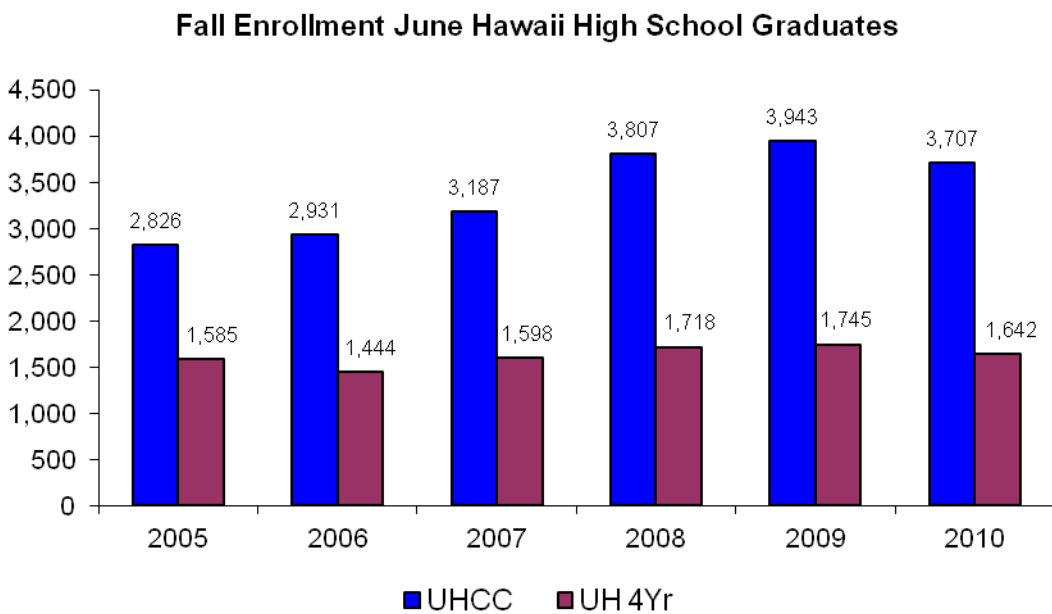
- 1) Hawaii: MAPS – High School Background of First-Time Students, Table 4
Includes public and private graduates
- 2) Nation: 2010 Data not available (National Center for Education Statistics table - College Enrollment and Labor Force Status of High School Completers).

Figure 4 - Number High School Graduates Immediate Transition to UH Community Colleges



Source: MAPS – High School Background of First-Time Students, Table 4

Figure 4a - Number of High School Graduates Immediate Transition to UH System by Unit



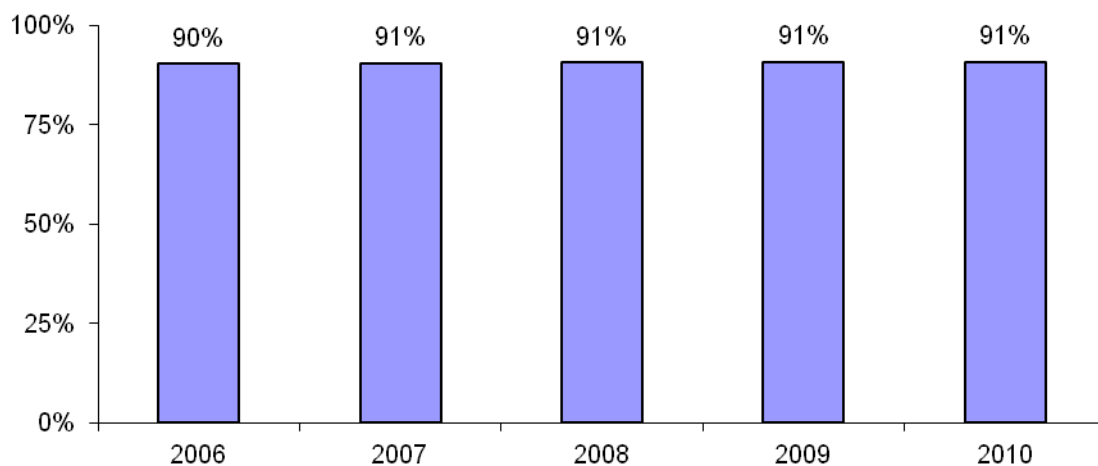
Source: MAPS – High School Background of First-Time Students, Table 4

ENROLLMENT BY RESIDENCY FOR TUITION STATUS

Table 1 - Enrollment by Residency for Tuition Status, Fall 2006 to Fall 2010

	Fall 2006		Fall 2007		Fall 2008		Fall 2009		Fall 2010	
	No.	%	No.	%	No.	%	No.	%	No.	%
Resident	22,542	89.2%	23,202	89.6%	25,524	89.7%	28,975	90.0%	30,807	90.1%
Resident Converted	282	1.1%	246	1.0%	264	0.9%	262	0.8%	275	0.8%
Residents Subtotal	22,824	90.4%	23,448	90.6%	25,788	90.7%	29,237	90.8%	31,082	90.9%
Not Exempted	1,297	5.1%	1,338	5.2%	1,494	5.3%	1,618	5.0%	1,711	5.0%
West Undergraduate Exchange	37	0.1%	44	0.2%	45	0.2%	58	0.2%	54	0.2%
Military Exemption	693	2.7%	669	2.6%	707	2.5%	793	2.5%	857	2.5%
Faculty/Staff Exemption	16	0.1%	20	0.1%	23	0.1%	30	0.1%	29	0.1%
Institutional Exemption	220	0.9%	119	0.5%	61	0.2%	24	0.1%	10	0.0%
Student Exchange	0	0.0%	1	0.0%	4	0.0%	0	0.0%	2	0.0%
Pacific-Asian Exemption	16	0.1%	14	0.1%	9	0.0%	1	0.0%		0.0%
East-West Center	2	0.0%	1	0.0%	1	0.0%	0	0.0%		0.0%
Hawaiian Exemption	155	0.6%	161	0.6%	184	0.6%	251	0.8%	255	0.7%
Rev Institutional/Exempt			60	0.2%	111	0.4%	162	0.5%	162	0.5%
Hawai'i National Guard & Reserve			12	0.0%	17	0.1%	29	0.1%	41	0.1%
Non-Resident Subtotal	2,436	9.6%	2,439	9.4%	2,656	9.3%	2,966	9.2%	3,121	9.1%
No Data	0	0.0%	0	0.0%	0	0.0%	0	0.0%	0	0.0%
GRAND TOTAL	25,260	100%	25,887	100%	28,444	100%	32,203	100%	34,203	100%

Percent Community College Students Paying Resident Tuition



Source: MAPS – Fall Enrollment Report University of Hawaii Community Colleges, Table 3 Selected Characteristics of Credit Students

INTERNATIONAL STUDENT ENROLLMENT

The University's long-standing interest in International Education has attracted a wealth of academic expertise, resources, and linkages. The University of Hawaii Community Colleges are engaged in a variety of international programs and projects, reflecting their commitment to developing institutional expertise in international education, with a particular focus on the Asia and Pacific region.

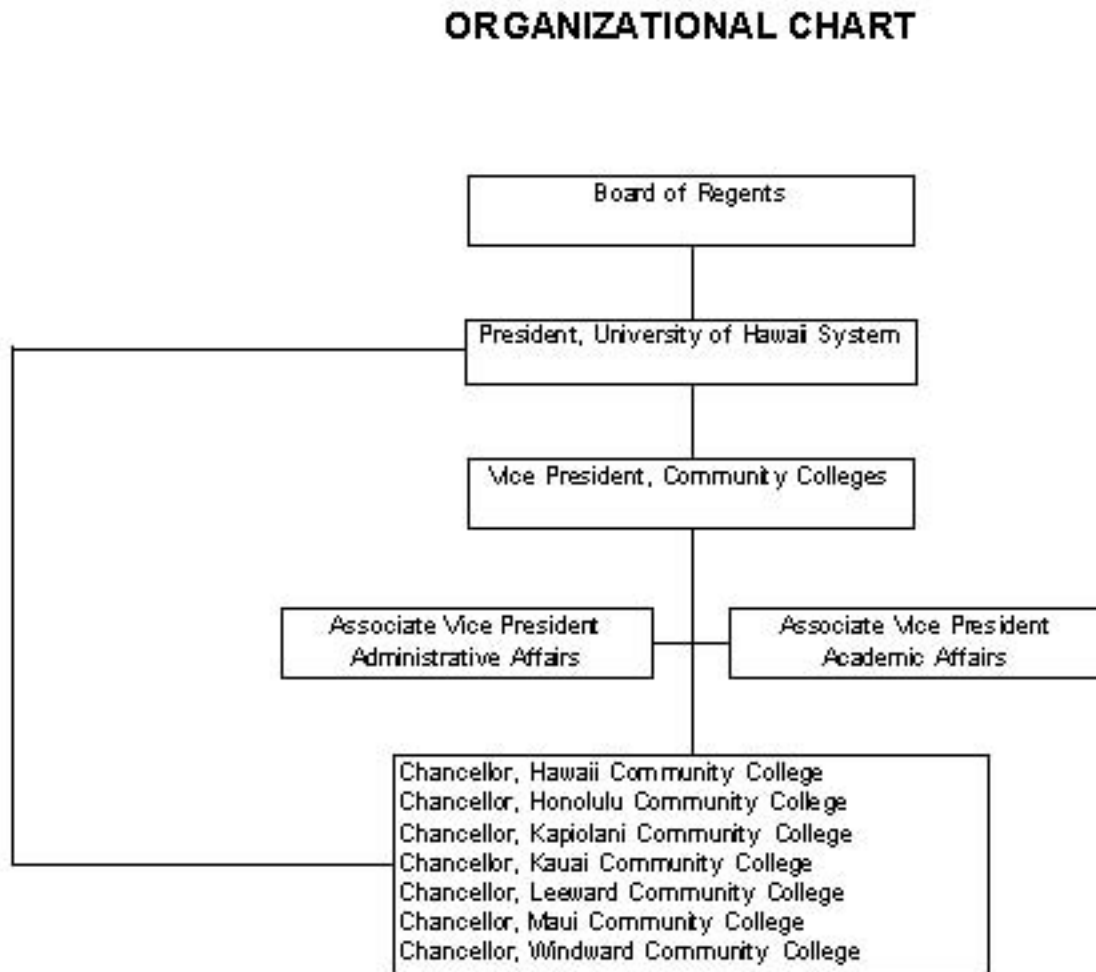
Table 2 - International Student Enrollment Fall 2010

Region of Origin	HAW	HON	KAP	KAU	LEE	MAU	WIN	UHCC
Africa	-	-	1	-	1	-	-	2
Americas	2	12	44	3	8	10	-	79
Asia	41	35	456	2	31	17	1	583
Australia	-	-	-	-	-	-	-	0
Europe	1	3	12	1	-	3	-	20
Middle East	1	1	1	-	1	-	-	4
Oceania	1	4	8	-	-	-	2	15
Total	46	55	522	6	41	30	3	703
Region of Origin	HAW	HON	KAP	KAU	LEE	MAU	WIN	UHCC

Source: ODS – IRO_BASE_UH (End of Semester)

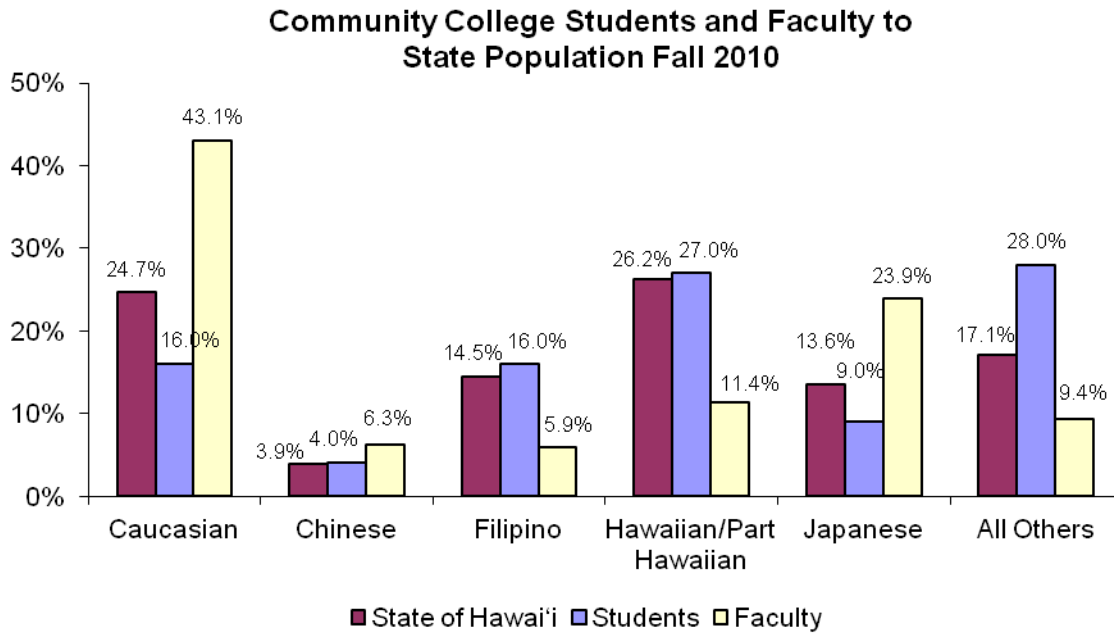
ORGANIZATIONAL CHART

Figure 5 - University Hawaii Community College System Organizational Chart



DIVERSITY

Figure 6 - State of Hawaii, Students, and Faculty Diversity

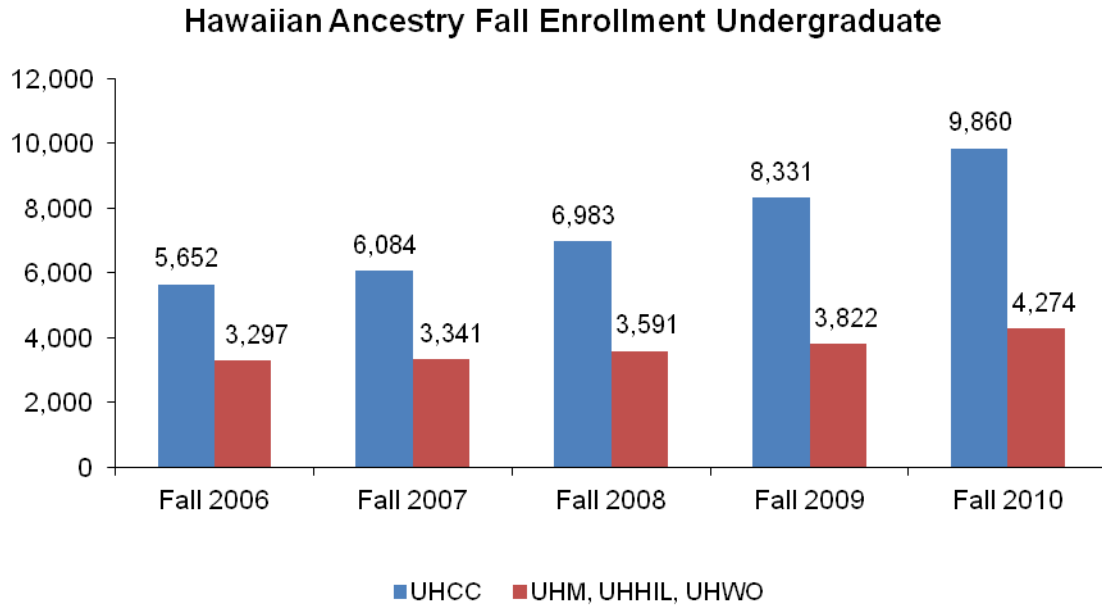


Sources:

- 1) State of Hawaii: Population 2010 (<http://hawaii.gov/dbedt>). Native Hawaiian Race Alone or in combination with one or more races.
- 2) Students: ODS – IRO_BASE_UH (Census)
UH System MAPS UHCC Fall 2010 Enrollment Report Table 3
- 3) Full Time Faculty: Community Colleges Human Resource Office

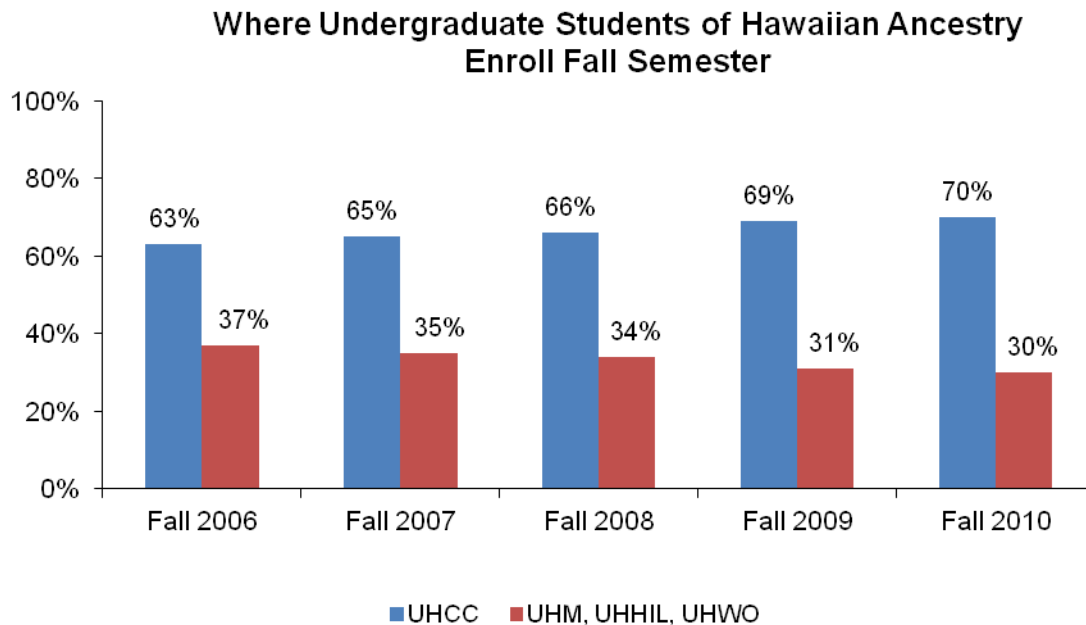
HAWAIIAN AND PART HAWAIIAN ENROLLMENT

Figure 7 - Hawaiian/Part Hawaiian Students Enrolled University of Hawai'i System



Source: ODS (CENSUS)

Figure 8 - Where Hawaiian/Part Hawaiian Students Enroll (Fall Semester)



Source: ODS (CENSUS)

EMPLOYEE PROFILE

Table 3 - Staff by Ethnicity and Gender Fall 2010

UHCC	Total		Exec/Mgr		Admin, Prof & Tech		Civil Service		Instruct Faculty		Other Faculty	
	Count	%	Count	%	Count	%	Count	%	Count	%	Count	%
All Employees	1,781		53	3.0	342	19.2	423	23.8	761	42.7	202	11.3
Asian and Pacific Islander	887	49.8	27	1.5	198	11.1	266	14.9	294	16.5	102	5.7
Chinese	108	6.1	1	0.1	22	1.2	24	1.3	43	2.4	18	1.0
Filipino	196	11.0	2	0.1	37	2.1	100	5.6	38	2.1	19	1.1
Indian Subcontinent	11	0.6	0	0.0	1	0.1	0	0.0	10	0.6	0	0.0
Japanese	499	28.0	24	1.3	130	7.3	115	6.5	172	9.7	58	3.3
Korean	26	1.5	0	0.0	3	0.2	5	0.0	16	0.9	2	0.1
Laotian	0	0.0	0	0.0	0	0.0	0	0.0	0	0.0	0	0.0
Thai	0	0.0	0	0.0	0	0.0	0	0.0	0	0.0	0	0.0
Vietnamese	0	0.0	0	0.0	0	0.0	0	0.0	0	0.0	0	0.0
Other Asian	47	2.6	0	0.0	5	0.3	22	1.2	15	0.8	5	0.3
Hawaiian and Pacific Islander	265	14.9	3	0.2	52	2.9	97	5.4	81	4.5	32	1.8
Guam Chamorro	0	0.0	0	0.0	0	0.0	0	0.0	0	0.0	0	0.0
Hawaiian/Part Hawaiian	257	14.4	3	0.2	50	2.8	93	5.2	80	4.5	31	1.7
Micronesian	0	0.0	0	0.0	0	0.0	0	0.0	0	0.0	0	0.0
Samoan	7	0.4	0	0.0	1	0.1	4	0.2	1	0.1	1	0.1
Tongan	0	0.0	0	0.0	0	0.0	0	0.0	0	0.0	0	0.0
Other Pacific Islander	1	0.1	0	0.0	1	0.1	0	0.0	0	0.0	0	0.0
Mixed Pacific Islander	0	0.0	0	0.0	0	0.0	0	0.0	0	0.0	0	0.0
Mixed Asian Pacific Islander	0	0.0	0	0.0	0	0.0	0	0.0	0	0.0	0	0.0
Other Ethnic Groups	581	32.6	20	1.1	78	4.4	45	2.5	375	21.1	63	3.5
African American	11	0.6	1	0.1	1	0.1	1	0.1	6	0.3	2	0.1
American Indian/Alaska Native	10	0.6	2	0.1	2	0.1	1	0.1	5	0.3	0	0.0
Caucasian	536	30.1	17	1.0	71	4.0	33	1.9	355	19.9	60	3.4
Hispanic	24	1.3	0	0.0	4	0.2	10	0.6	9	0.5	1	0.1
Mixed	0	0.0	0	0.0	0	0.0	0	0.0	0	0.0	0	0.0
No Response	48	2.7	3	0.2	14	0.8	15	0.8	11	0.6	5	0.3
Gender												
Female	1001	56.2	18	1.0	193	10.8	286	16.1	374	21.0	130	7.3
Male	757	42.5	35	2.0	149	8.4	137	7.7	387	21.7	49	2.8

Source: UH Community Colleges Human Resources Office, September 2011

FACULTY BY RANK, ETHNICITY, AND GENDER

Table 4 - Full Time Faculty by Rank, Ethnicity, and Gender Fall 2010

UHCC SYSTEM	Total		Professor		Associate		Assistant		Instructor	
	Count	%	Count	%	Count	%	Count	%	Count	%
All Faculty	963	100	253	26.3	138	14.3	223	23.2	349	36.2
Asian and Pacific Islander	396	41.1	121	12.6	64	6.6	98	10.2	113	11.7
Chinese	61	6.3	21	2.2	10	1.0	14	1.5	16	1.7
Filipino	57	5.9	8	0.8	6	0.6	20	2.1	23	2.4
Indian Subcontinent	10	1.0	3	0.3	2	0.2	2	0.2	3	0.3
Japanese/Okinawan	230	23.9	78	8.1	42	4.4	55	5.7	55	5.7
Korean	18	1.9	6	0.6	3	0.3	3	0.3	6	0.6
Laotian	0	0.0	0	0.0	0	0.0	0	0.0	0	0.0
Thai	0	0.0	0	0.0	0	0.0	0	0.0	0	0.0
Vietnamese	0	0.0	0	0.0	0	0.0	0	0.0	0	0.0
Other Asian	20	2.1	5	0.5	1	0.1	4	0.4	10	1.0
Hawaiian and Pacific Islander	113	11.7	10	1.0	6	0.6	34	3.5	63	6.5
Guam Chamorro	1	0.1	0	0.0	1	0.1	0	0.0	0	0.0
Hawaiian/Part Hawaiian	110	11.4	10	1.0	5	0.5	34	3.5	61	6.3
Micronesian	0	0.0	0	0.0	0	0.0	0	0.0	0	0.0
Samoan	2	0.2	0	0.0	0	0.0	0	0.0	2	0.2
Tongan	0	0.0	0	0.0	0	0.0	0	0.0	0	0.0
Other Pacific Islander	0	0.0	0	0.0	0	0.0	0	0.0	0	0.0
Mixed Pacific Islander	0	0.0	0	0.0	0	0.0	0	0.0	0	0.0
Mixed Asian Pacific Islander	0	0.0	0	0.0	0	0.0	0	0.0	0	0.0
Other Ethnic Groups	438	45.5	122	12.7	68	7.1	90	9.3	158	16.4
African American	9	0.9	2	0.2	1	0.1	1	0.1	5	0.5
American Indian/Alaska Native	5	0.5	1	0.1	0	0.0	0	0.0	4	0.4
Caucasian	415	43.1	118	12.3	67	7.0	85	8.8	145	15.1
Hispanic	9	0.9	1	0.1	0	0.0	4	0.4	4	0.4
Mixed	0	0.0	0	0.0	0	0.0	0	0.0	0	0.0
No Response	16	1.7	0	0.0	0	0.0	1	0.1	15	1.6
Gender										
Female	515	53.5	133	13.8	74	7.7	118	12.3	190	19.7
Male	438	45.5	120	12.5	64	6.6	95	9.9	159	16.5

Source: UH Community Colleges Human Resources Office, October 2010

STUDENT PROFILE

Table 5 - Student Enrollment - Ethnicity and Gender Fall 2010

	All Students		Male		Female		No Data	
	Count	%	Count	%	Count	%	Count	%
All Student	34,203		14,472	42.3	19,482	57.0	249	0.7
Asian and Pacific Islander	23,273	68.0	9,755	28.5	13,357	39.1	161	0.5
Asian	13,007	38.0	5,894	17.2	7,032	20.6	81	0.2
Chinese	1,213	3.5	599	1.8	604	1.8	10	0.0
Filipino	5,375	15.7	2,334	6.8	3,005	8.8	36	0.1
Indian Subcontinent	144	0.4	71	0.2	73	0.2	0	0.0
Japanese	3,156	9.2	1,458	4.3	1,682	4.9	16	0.0
Korean	633	1.9	279	0.8	352	1.0	2	0.0
Laotian	55	0.2	25	0.1	30	0.1	0	0.0
Mixed Asian	1,911	5.6	900	2.6	997	2.9	14	0.0
Other Asian	183	0.5	91	0.3	90	0.3	2	0.0
Thai	56	0.2	13	0.0	43	0.1	0	0.0
Vietnamese	281	0.8	124	0.4	156	0.5	1	0.0
Hawaiian and Pacific Islander	10,266	30.0	3,861	11.3	6,325	18.5	80	0.2
Guam Chamorro	80	0.2	34	0.1	46	0.1	0	0.0
Hawaiian Part Hawaiian	9,374	27.4	3,500	10.2	5,801	17.0	73	0.2
Micronesian	203	0.6	87	0.3	113	0.3	3	0.0
Samoan	265	0.8	101	0.3	161	0.5	3	0.0
Tongan	79	0.2	23	0.1	55	0.2	1	0.0
Mixed Pacific Islander	52	0.2	21	0.1	31	0.1	0	0.0
Other Pacific Islander	213	0.6	95	0.3	118	0.3	0	0.0
Other Ethnic Groups	10,930	32.0	4,717	13.8	6,125	17.9	88	0.3
African American	508	1.5	263	0.8	238	0.7	7	0.0
American Indian/Alaskan Native	142	0.4	54	0.2	87	0.3	1	0.0
Caucasian	5,407	15.8	2,308	6.7	3,066	9.0	33	0.1
Hispanic	692	2.0	272	0.8	417	1.2	3	0.0
Mixed	4,003	11.7	1,720	5.0	2,244	6.6	39	0.1
No Response	178	0.5	100	0.3	73	0.2	5	0.0

Sources: 1) ODS – IRO_BASE_UH (Census)

2) UH System MAPS UHCC Fall 2010 Enrollment Report Table 3

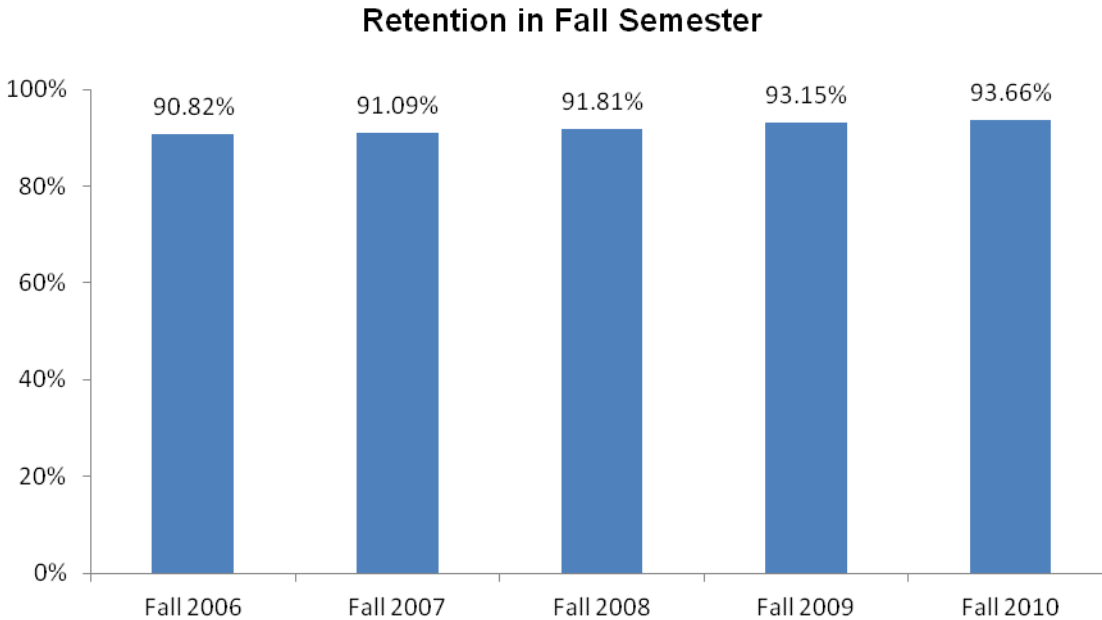
STUDENT RETENTION, PERSISTENCE, AND DEGREES AND CERTIFICATES AWARDED

The following figures show measures of student success in meeting educational objectives and demonstrating student movement.

RETENTION

Retention rate refers to those students who are enrolled in a course at the fall census date and who do not drop or withdraw before the end of the semester. Within the University of Hawai'i Community College System, this has also been called Course Completion Rate.

Figure 9 - Retention (Course Completion)

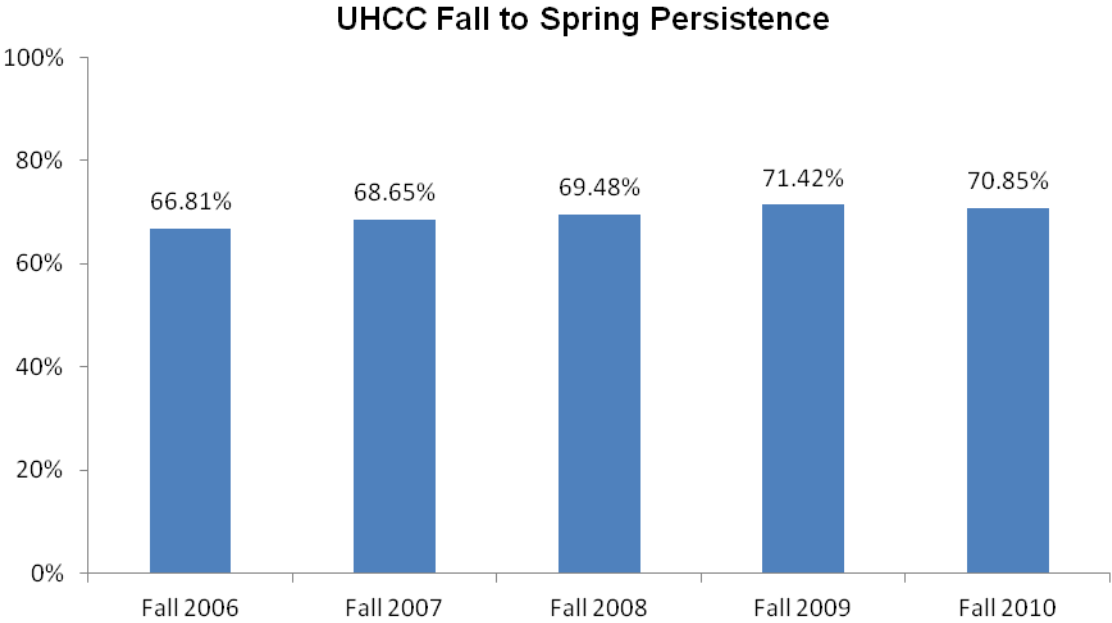


Source: ODS – IRO_REGS_UH (End of Semester)

PERSISTENCE

Persistence refers to students enrolled in the college at the fall census, for whom the college is their “home” campus, and, who are also enrolled in the same “home” campus the following spring.

Figure 10 - Persistence

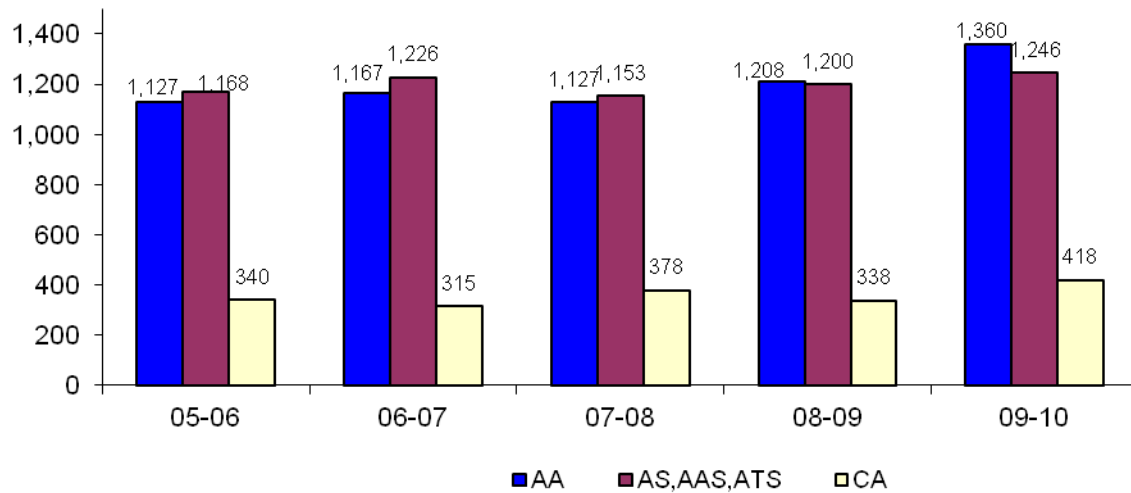


Source: ODS – IRO_REGS_UH (Census)

DEGREES AND CERTIFICATES AWARDED

Figure 11 - Annual Number Degrees and Certificates Awarded

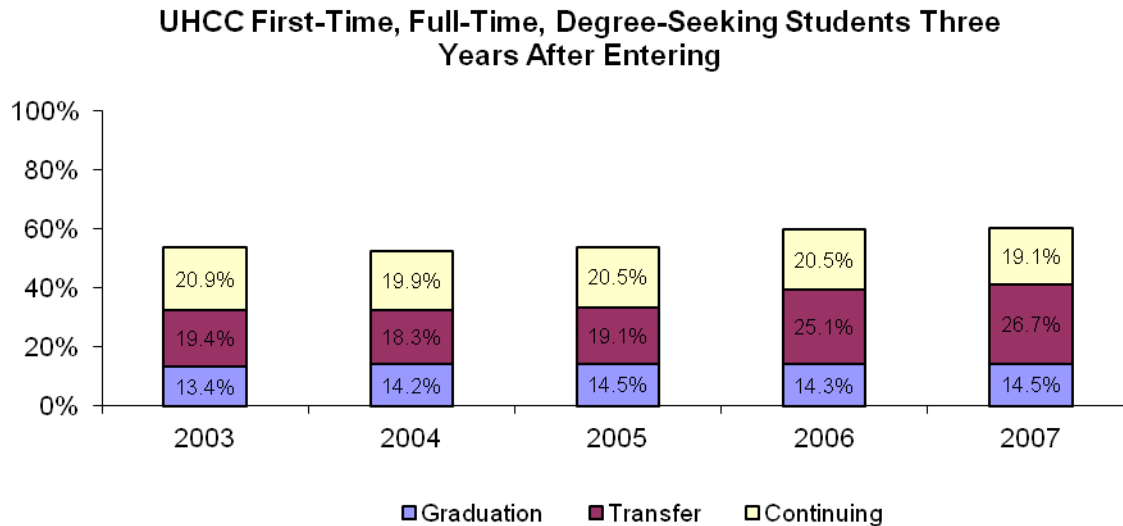
Degrees and Certificates Achievement Awarded



Source: ODS - IRO_DEGREE_UH (End of Semester)

CONTINUING ENROLLMENT, TRANSFER, AND GRADUATION

Figure 12 - Continuing Enrollment, Transfer, and Graduation of first-time, full-time, degree-seeking students within 150 of first time enrollment



Source: IPEDS – Graduation Rate Survey

Notes:

- 1) Numbers are unduplicated
- 2) Graduation – first time, full time students who received a degree or certificate within 150 of time from first time enrollment
- 3) Transfer – first time, full-time students who transfer (as matched by National Student Clearinghouse data) to another postsecondary institution within 150 of time from first time enrollment
- 4) Continuing – first time, full time students who are still enrolled at the same institution within 150 of time from first time enrollment and who have not received a degree or certificate

TRANSFERS TO COLLEGES AND UNIVERSITIES

Table 6 looks at the transfer behaviors of students whose last term of attendance was between the semesters of Fall 2007 to Fall 2010 compared against National Student Clearinghouse (NSC) data in August 2011. As some students have attended multiple colleges, the first college that a student attended was selected for this analysis.

Table 6 - Transfer Numbers and Rates

Last Term Attended	Total Number of Records	Total Transfers		Transfer to UH 4-Year Institutions		Transfers to a UH Community College		Transfers to Hawaii Private Institutions		Transfer to Out of State Institutions	
		N	%	N	%	N	%	N	%	N	%
Fall 2007	5130	1973	38.5	685	34.7	512	26.0	147	7.5	629	31.9
Fall 2008	5545	2060	37.2	729	35.4	540	26.2	173	8.4	618	30.0
Fall 2009	6347	1957	30.8	721	36.8	495	25.3	162	8.3	579	29.6
Fall 2010	8260	1493	18.1	626	41.9	254	17.0	137	9.2	476	31.9
Spring 2008	6082	2523	41.5	1018	40.3	587	23.3	137	5.4	781	31
Spring 2009	6702	2569	38.3	1103	42.9	590	23.0	163	6.3	713	27.8
Spring 2010	8745	2657	30.4	1089	41.0	551	20.7	222	8.4	795	29.9
Summer 2008	1248	774	62.0	341	44.1	107	13.8	42	5.4	284	36.7
Summer 2009	1216	711	58.5	300	42.2	71	10.0	39	5.5	301	42.3
Summer 2010	1298	629	48.5	237	37.7	58	9.2	30	4.8	304	48.3

Sources:

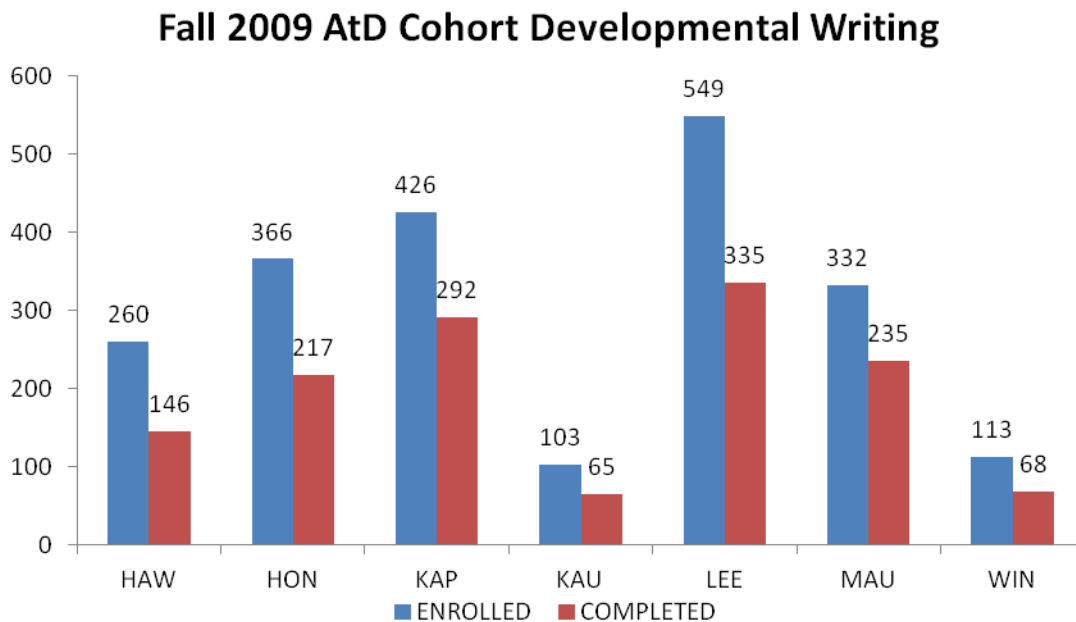
- 1) Operational Data Store (ODS)
- 2) National Student Clearinghouse

DEVELOPMENTAL EDUCATION COMPLETION

Students lacking academic preparation for their chosen college programs are a national and local concern. The University of Hawaii Community College system is committed to increasing the number and percent of students enrolled in developmental intervention who successfully complete at least one course in the developmental sequence within their first academic year thus making progress towards degree applicable instruction.

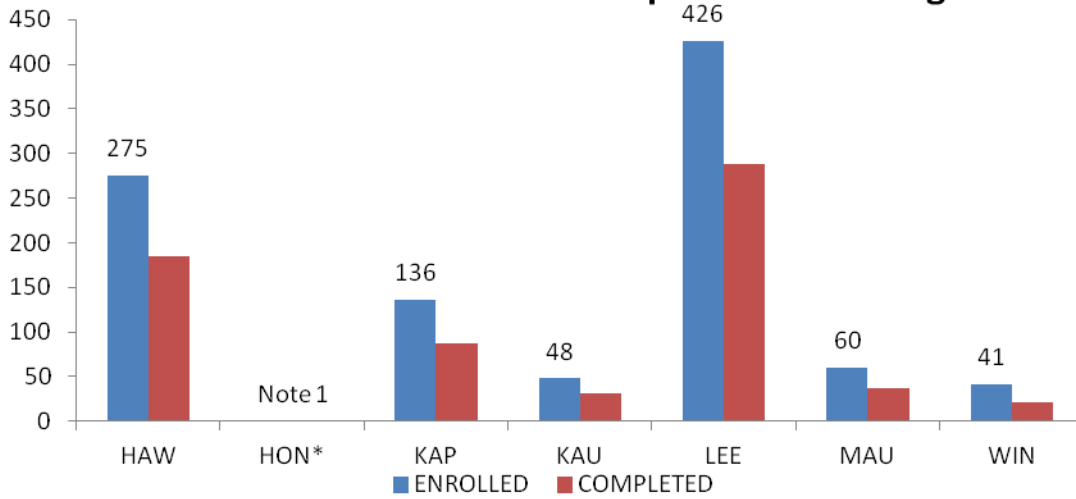
The following are measures of the Achieving the Dream Cohort students who enroll in any developmental course and successfully complete at least one developmental course within the first academic year.

Figure 13 - Developmental Education Completion



Source: AtD -- from UHCC Strategic Plan 2.3

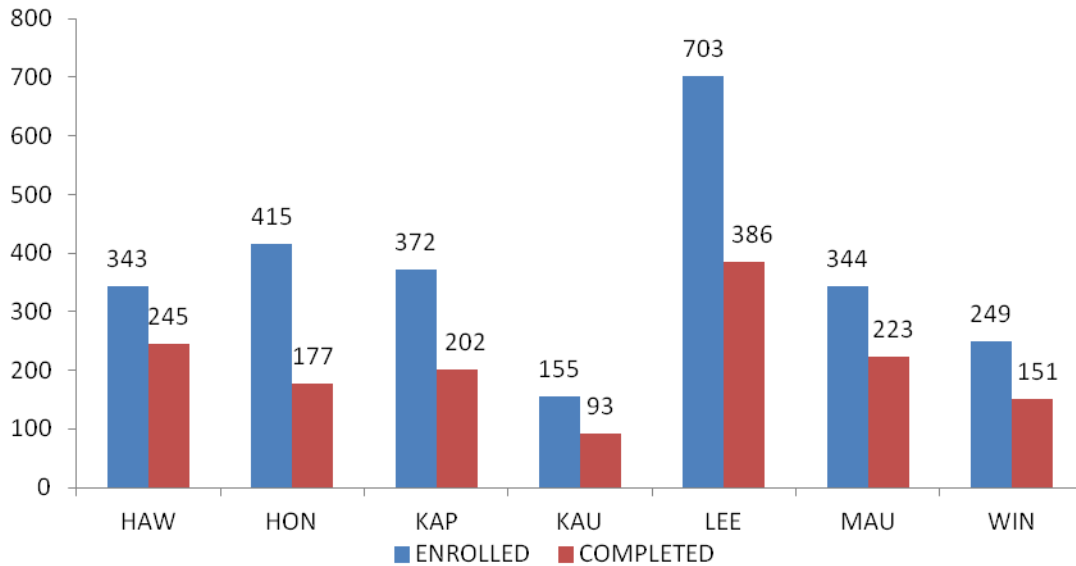
Fall 2009 AtD Cohort Developmental Reading



Source: AtD — from UHCC Strategic Plan 2.3

Note 1: Developmental Reading not offered at Honolulu 2009-2010

Fall 2009 AtD Cohort Developmental Math



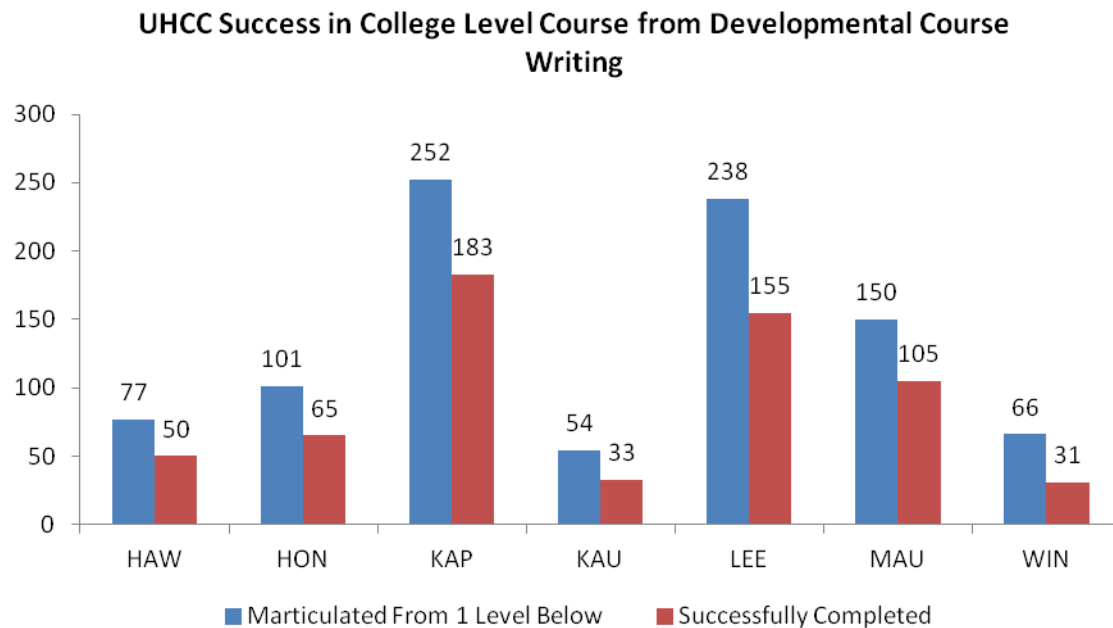
Source: AtD — from UHCC Strategic Plan 2.3

DEVELOPMENTAL EDUCATION – SUCCESS IN THE NEXT COLLEGE LEVEL COURSE

The University of Hawaii Community College system is committed to increasing student success and progress towards degree applicable instruction.

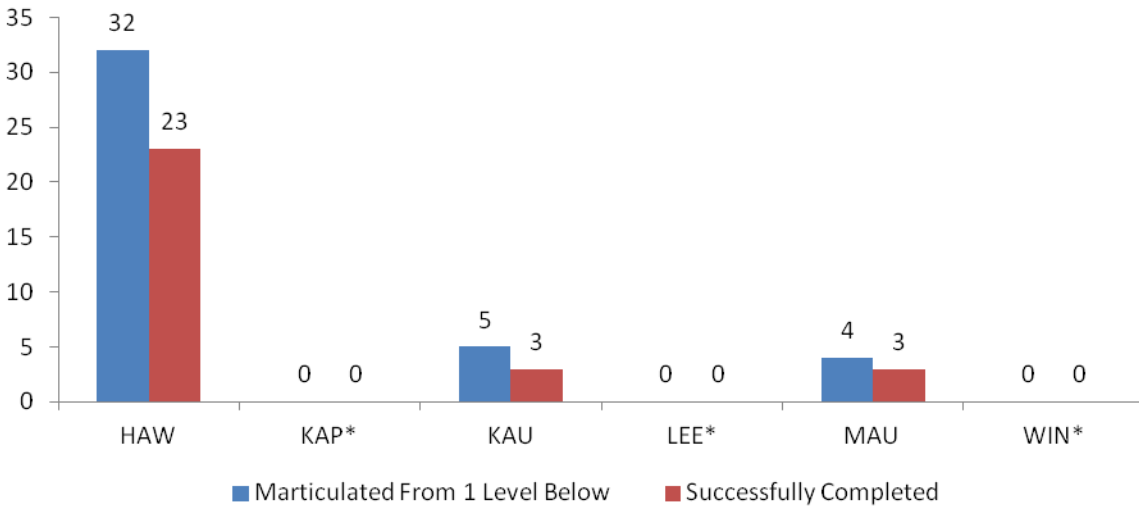
The following are measures of students who enroll in a developmental course one level below the college level course and successfully complete both courses within the academic year, fall to spring.

Figure 13a – Success in Next Course



Source: ODS AtD, Annual Reports of Program Data, IRO_REGS

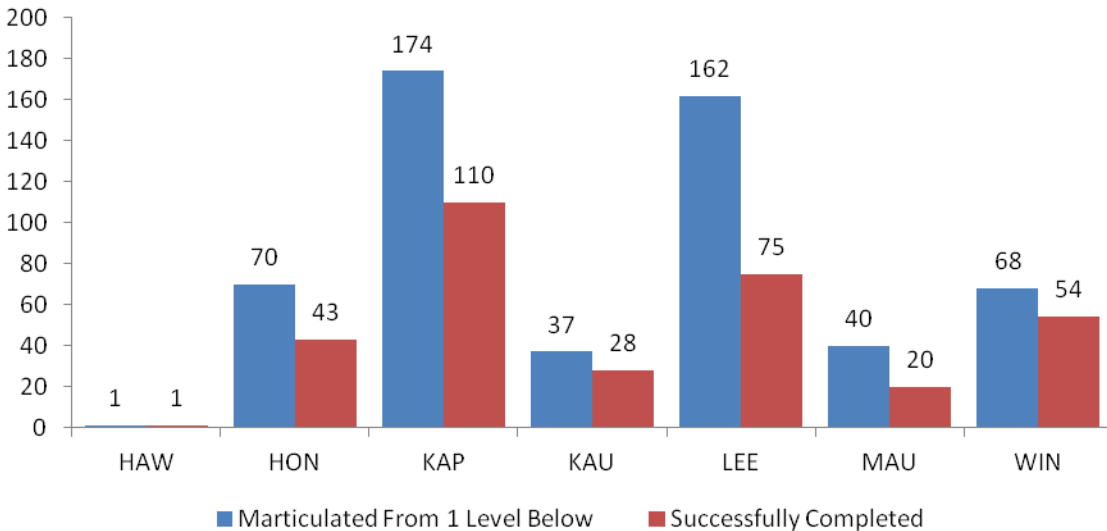
**UHCC Success in College Level Course from Developmental Course
Reading**



Source: ODS AtD, Annual Reports of Program Data, IRO_REGS

*Low numbers indicate college level reading courses may not be required and/or not offered in the spring (Chart does not include Honolulu, Developmental Reading not offered 2009-2010)

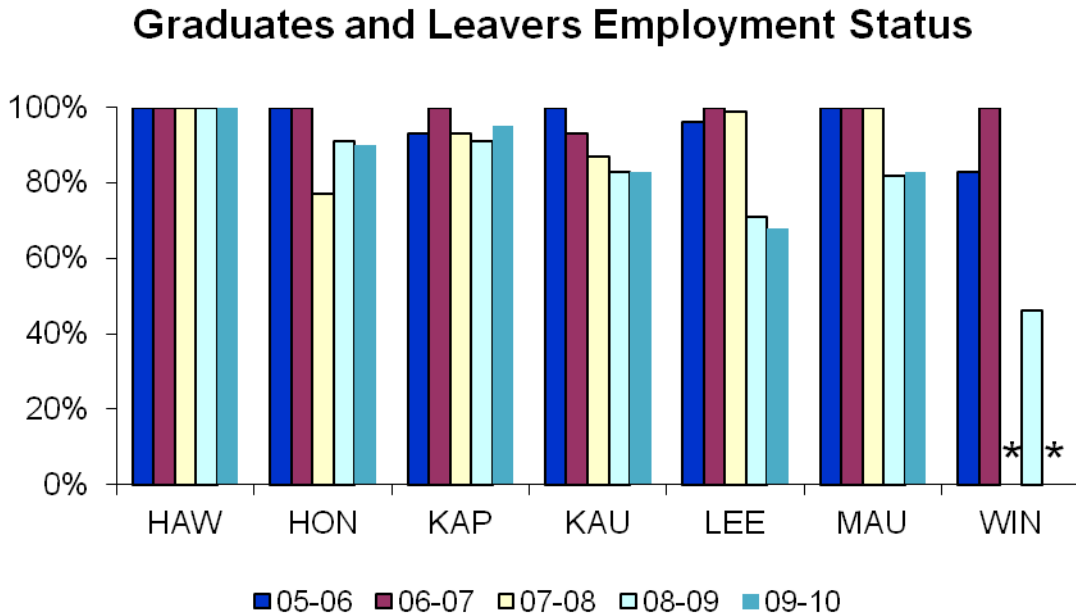
**UHCC Success in College Level Course from Developmental Course
Math**



Source: ODS AtD, Annual Reports of Program Data, IRO_REGS

Job Placement and Preparation

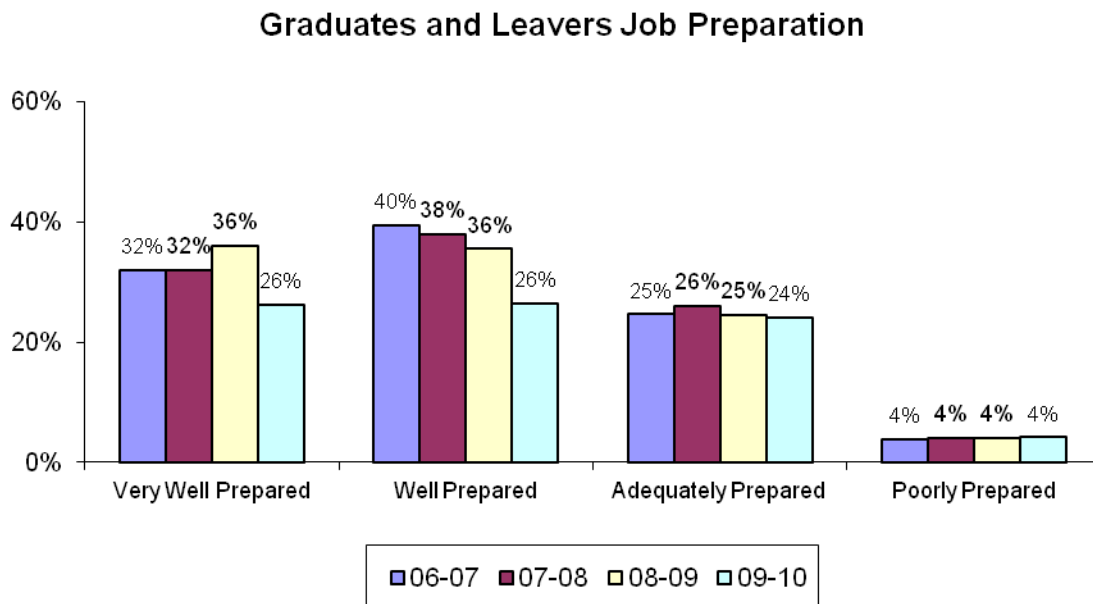
Figure 14 - Employment Status



Note: * indicates no responses from CTE Graduates/Leavers

Source: UH Community Colleges campus Graduate and Leavers surveys

Figure 15 - Graduates and Leavers Job Preparation

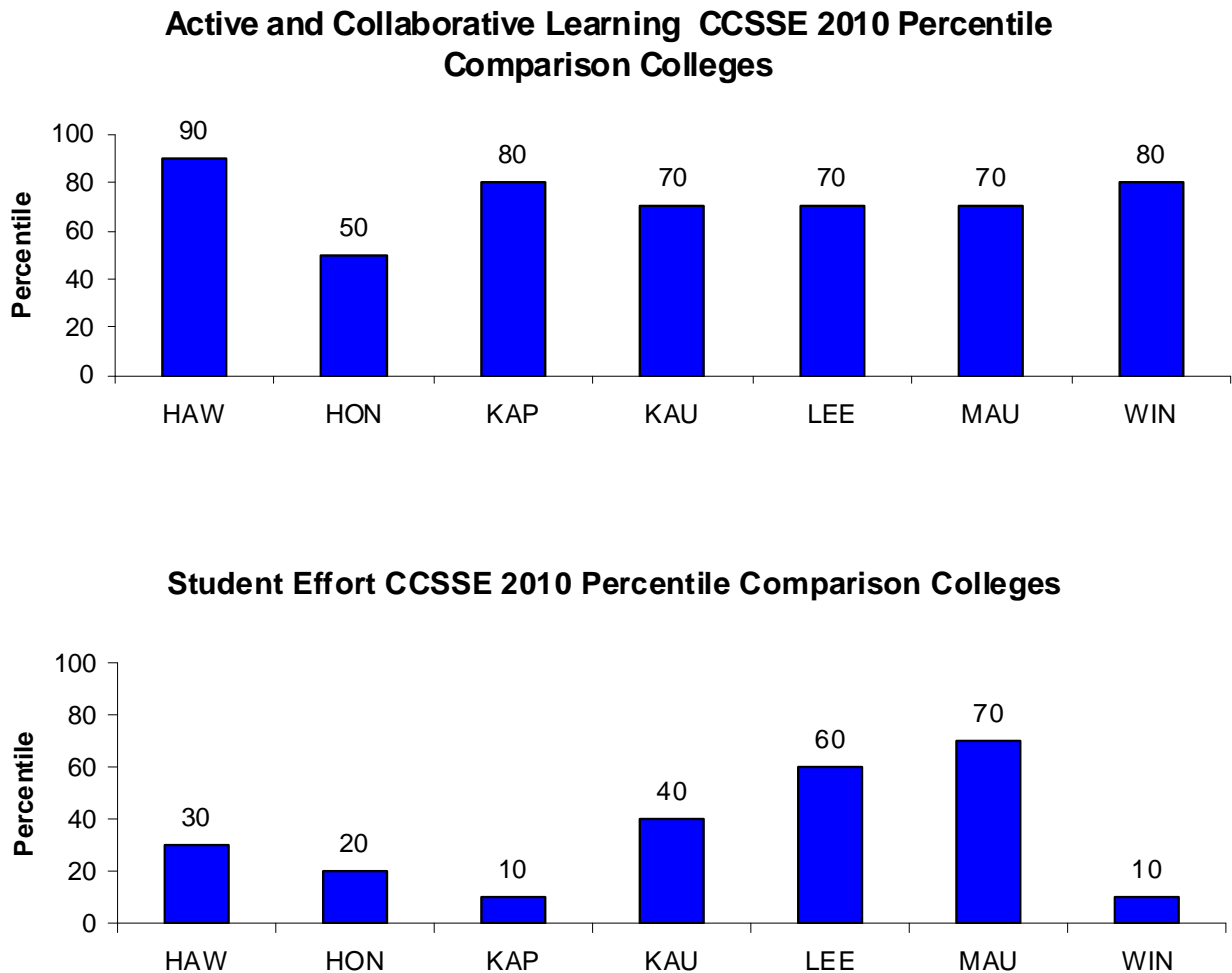


Source: UH Community Colleges campus Graduate and Leavers surveys

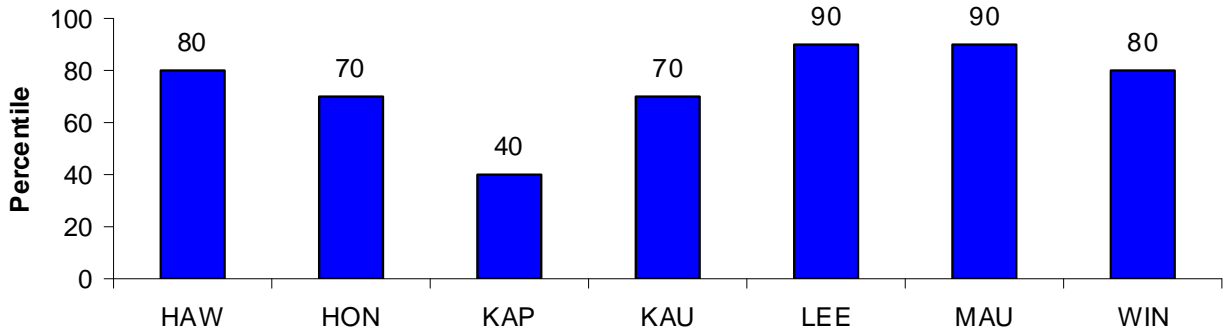
STUDENT ENGAGEMENT

Research shows that the more actively engaged students are –with college faculty and staff, with other students, and with the subject matter they study – the more likely they are to learn and persist toward achieving their academic goals. Student engagement, therefore, is a valuable yardstick for assessing whether, and to what extent, an institution is employing educational practices likely to produce successful results. Scores are displayed in percentiles against all other Community College Survey Student Engagement (CCSSE) colleges surveyed of similar size.

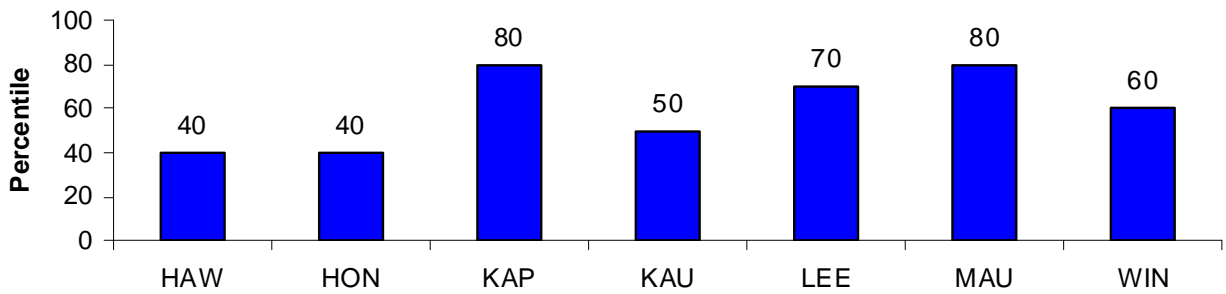
Figure 16 - CSSE Benchmark Percentiles



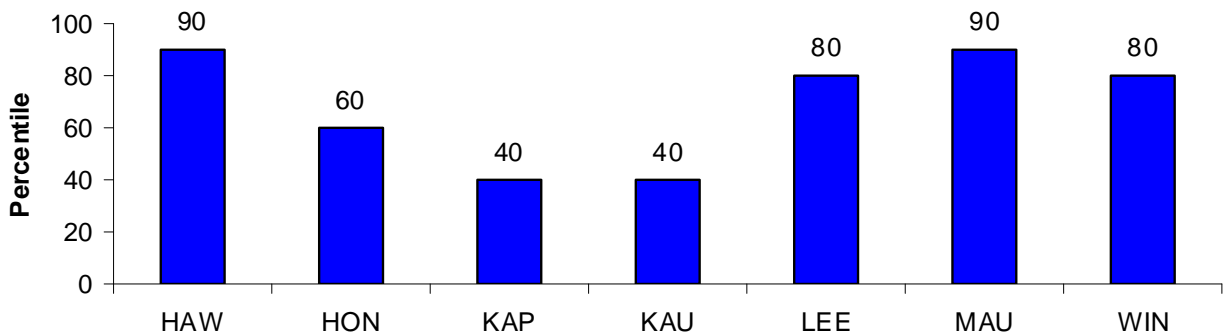
Academic Challenge CCSSE 2010 Percentile Comparison Colleges



Student-Faculty Interaction CCSSE 2010 Percentile Comparison Colleges



Support for Learners CCSSE 2010 Percentile Comparison Colleges



Source: CCSSE 2010 National Report

**Appendix A - Figure 1:
Historical Fall Headcount and Full-Time Equivalent (FTE)
Enrollment Disaggregated Data**

UHCC Fall Enrollment Full-Time Equivalent (FTE) Enrollment

	2006		2007		2008		2009		2010	
	Headcount	FTE	Headcount	FTE	Headcount	FTE	Headcount	FTE	Headcount	FTE
Total	25,260	14,580	25,890	14,913	28,444	16,296	32,203	18,491	34,203	19,759
Age										
Recent High School Graduates	2,931	2,130	3,190	2,357	3,810	2,777	3,944	2,842	3,705	2,649
Other< 22 Year Olds	9,797	6,288	10,030	6,424	10,903	6,855	12,203	7,673	12,771	8,102
22-24	4,048	2,237	4,056	2,163	4,358	2,316	5,047	2,723	5,399	2,870
25-49	7,574	3,595	7,660	3,633	8,367	3,984	9,935	4,837	11,099	5,624
>49	906	328	951	334	1,005	363	1,072	416	1,228	514
Age Not Reported	4	2	3	2	1	0	2	0	1	0
Race/Ethnicity										
American Indian or Alaska Native	95	56	104	64	131	72	147	82	142	82
Asian	11,398	6,687	11,487	6,703	12,297	7,102	13,264	7,634	13,007	7,552
Black or African American	272	153	293	173	308	175	388	225	508	285
Hispanic/Latino of Any Race	540	296	577	321	646	348	784	434	692	389
Native Hawaiian	4,614	2,734	5,122	2,994	5,960	3,540	7,175	4,252	9,374	5,577
Other Pacific Islander	760	440	794	464	906	522	1,032	594	892	512
White	3,951	2,124	3,887	2,071	4,293	2,280	5,008	2,702	5,407	2,952
Two or More Races	3,077	1,782	3,183	1,863	3,463	2,009	3,875	2,253	4,003	2,313
Unknown/Other	553	308	443	261	440	248	530	314	178	98
Gender										
Female	14,620	8,126	14,927	8,245	16,457	9,091	18,371	10,112	19,482	10,795
Male	10,581	6,416	10,884	6,613	11,885	7,138	13,667	8,274	14,472	8,806
Not Reported	59	37	79	56	102	67	165	106	249	158
Socio Economic (Pell)										
Received Pell	3,713	2,441	4,152	2,745	5,137	3,336	8,107	5,170	10,569	6,758
Did not receive Pell	21,547	12,139	21,738	12,168	23,307	12,960	24,096	13,322	23,634	13,001
Distance Completely On-Line Courses (DCO)										
Student Took 1 or More DCO	0	0	4,281	2,295	5,825	3,130	7,902	4,186	9,162	4,916
Student Took No DCO	25,260	14,580	21,609	12,619	22,619	13,166	24,301	14,305	25,041	14,843
AtD Cohort										
AtD Cohort Entering Year	5,550	3,666	5,433	3,666	6,222	4,208	7,352	4,948	7,410	4,982

UHCC Fall Enrollment Full-Time Equivalent (FTE) Enrollment General and Pre-Professional Students

	2006		2007		2008		2009		2010	
	Headcount	FTE	Headcount	FTE	Headcount	FTE	Headcount	FTE	Headcount	FTE
Total	11,813	7,463	12,008	7,610	13,269	8,405	15,144	9,699	16,133	10,342
Age										
Recent High School Graduates	1,755	1,289	1,941	1,435	2,369	1,764	2,482	1,843	2,330	1,711
Other< 22 Year Olds	4,916	3,425	4,993	3,511	5,440	3,759	6,241	4,353	6,695	4,691
22-24	1,868	1,102	1,774	1,015	1,855	1,069	2,146	1,285	2,274	1,352
25-49	2,982	1,526	3,007	1,525	3,288	1,678	3,937	2,070	4,416	2,398
>49	292	121	293	123	317	135	338	148	418	189
Age Not Reported	0	0	0	0	0	0	0	0	0	0
Race/Ethnicity										
American Indian or Alaska Native	45	28	44	30	65	38	70	42	68	43
Asian	5,046	3,262	5,016	3,233	5,421	3,487	5,865	3,826	5,778	3,772
Black or African American	149	89	150	94	167	103	189	118	257	161
Hispanic/Latino of Any Race	286	171	301	180	318	194	416	253	366	225
Native Hawaiian	2,278	1,441	2,511	1,603	2,866	1,857	3,476	2,251	4,640	2,995
Other Pacific Islander	422	263	425	270	487	293	550	342	462	281
White	1,797	1,088	1,741	1,048	2,022	1,227	2,347	1,439	2,497	1,535
Two or More Races	1,558	973	1,614	1,015	1,742	1,095	1,981	1,263	1,983	1,279
Unknown/Other	232	147	206	137	181	111	250	166	82	49
Gender										
Female	7,175	4,436	7,268	4,503	7,986	4,982	8,947	5,621	9,546	6,009
Male	4,614	3,012	4,705	3,082	5,238	3,394	6,120	4,028	6,450	4,236
Not Reported	24	15	35	24	45	29	77	50	137	96
Socio Economic (Pell)										
Received Pell	2,064	1,426	2,388	1,646	2,877	1,979	4,413	3,009	5,628	3,862
Did not receive Pell	9,749	6,037	9,620	5,963	10,392	6,426	10,731	6,690	10,505	6,480
Distance Completely On-Line Courses (DCO)										
Student Took 1 or More DCO	0	0	1,760	1,125	2,442	1,576	3,281	2,130	3,916	2,558
Student Took No DCO	11,813	7,463	10,248	6,485	10,827	6,830	11,863	7,569	12,217	7,783
AtD Cohort										
AtD Cohort Entering Year	3,560	2,341	3,557	2,395	4,184	2,794	4,850	3,242	4,744	3,145

Data Source:

ODS - IRAO Freeze Tables - IRO_BASE, CENSUS

ODS - OVPCC Demographic Table - OVPCC_DIAD_SEMESTER: Table population is from IRO_BASE with Pell and DCO groupings; MTT_ACCOUNT_DETAIL and IRO_REGS

ODS - OVPCC Achieving the Dream Tables - OVPCC_ATD_COHORT

UHCC Fall Enrollment Full-Time Equivalent (FTE) Enrollment Career and Technical Ed Students

	2006		2007		2008		2009		2010	
	Headcount	FTE	Headcount	FTE	Headcount	FTE	Headcount	FTE	Headcount	FTE
Total	7,267	4,761	7,393	4,863	7,979	5,273	9,025	5,948	9,908	6,640
Age										
Recent High School Graduates	869	665	905	713	1,051	812	1,116	839	1,052	796
Other < 22 Year Olds	2,409	1,768	2,491	1,819	2,599	1,909	2,856	2,079	3,063	2,239
22-24	1,115	733	1,110	717	1,160	759	1,368	882	1,458	954
25-49	2,599	1,470	2,611	1,493	2,863	1,658	3,319	1,971	3,891	2,420
>49	273	123	274	120	306	135	366	177	444	232
Age Not Reported	2	1	2	1	0	0	0	0	0	0
Race/Ethnicity										
American Indian or Alaska Native	29	19	31	22	36	24	50	32	50	33
Asian	3,414	2,256	3,451	2,287	3,536	2,362	3,713	2,466	3,793	2,565
Black or African American	74	46	71	52	83	55	118	79	145	93
Hispanic/Latino of Any Race	137	80	139	92	167	97	188	119	181	115
Native Hawaiian	1,432	957	1,543	1,016	1,843	1,242	2,260	1,511	2,881	1,968
Other Pacific Islander	224	135	211	137	269	170	294	184	308	195
White	996	633	1,001	621	1,025	639	1,249	794	1,480	958
Two or More Races	815	537	825	560	902	606	1,019	679	1,029	685
Unknown/Other	146	96	121	76	118	78	134	84	41	29
Gender										
Female	3,596	2,290	3,651	2,314	3,972	2,545	4,368	2,789	4,823	3,128
Male	3,648	2,455	3,710	2,525	3,965	2,696	4,601	3,114	5,028	3,471
Not Reported	23	15	32	24	42	32	56	45	57	42
Socio Economic (Pell)										
Received Pell	1,206	894	1,270	957	1,590	1,165	2,521	1,838	3,375	2,476
Did not receive Pell	6,061	3,867	6,123	3,907	6,389	4,108	6,504	4,110	6,533	4,165
Distance Completely On-Line Courses (DCO)										
Student Took 1 or More DCO	0	0	936	630	1,225	820	1,585	1,061	1,909	1,292
Student Took No DCO	7,267	4,761	6,457	4,234	6,754	4,453	7,440	4,887	7,999	5,349
AtD Cohort										
AtD Cohort Entering Year	1,949	1,317	1,853	1,271	2,038	1,414	2,502	1,706	2,666	1,837

Data Source:

ODS - IRAO Freeze Tables - IRO_BASE, CENSUS

ODS - OVPCC Demographic Table - OVPCC_DIAD_SEMESTER: Table population is from IRO_BASE with Pell and DCO groupings; MTT_ACCOUNT_DETAIL and IRO_REGS

ODS - OVPCC Achieving the Dream Tables - OVPCC_ATD_COHORT

**UHCC Fall Enrollment
Full-Time Equivalent (FTE) Enrollment
All Other Students**

	2006		2007		2008		2009		2010	
	Headcount	FTE	Headcount	FTE	Headcount	FTE	Headcount	FTE	Headcount	FTE
Total	6,180	2,356	6,489	2,441	7,196	2,617	8,034	2,844	8,162	2,777
Age										
Recent High School Graduates	307	176	344	209	390	201	346	160	323	142
Other< 22 Year Olds	2,472	1,095	2,546	1,095	2,864	1,187	3,106	1,240	3,013	1,172
22-24	1,065	402	1,172	430	1,343	488	1,533	556	1,667	564
25-49	1,993	600	2,042	615	2,216	649	2,679	797	2,792	806
>49	341	84	384	91	382	93	368	91	366	93
Age Not Reported	2	0	1	0	1	0	2	0	1	0
Race/Ethnicity										
American Indian or Alaska Native	21	9	29	12	30	10	27	8	24	6
Asian	2,938	1,169	3,020	1,183	3,340	1,253	3,686	1,342	3,436	1,214
Black or African American	49	17	72	27	58	17	81	29	106	31
Hispanic/Latino of Any Race	117	44	137	50	161	57	180	62	145	49
Native Hawaiian	904	335	1,068	374	1,251	440	1,439	489	1,853	614
Other Pacific Islander	114	42	158	57	150	59	188	69	122	36
White	1,158	402	1,145	402	1,246	414	1,412	469	1,430	459
Two or More Races	704	272	744	289	819	309	875	311	991	349
Unknown/Other	175	65	116	47	141	59	146	64	55	19
Gender										
Female	3,849	1,400	4,008	1,427	4,499	1,563	5,056	1,701	5,113	1,658
Male	2,319	949	2,469	1,006	2,682	1,049	2,946	1,132	2,994	1,099
Not Reported	12	7	12	7	15	6	32	10	55	20
Socio Economic (Pell)										
Received Pell	443	121	494	142	670	191	1,173	322	1,566	421
Did not receive Pell	5,737	2,235	5,995	2,299	6,526	2,426	6,861	2,521	6,596	2,356
Distance Completely On-Line Courses (DCO)										
Student Took 1 or More DCO	0	0	1,585	540	2,158	734	3,036	995	3,337	1,066
Student Took No DCO	6,180	2,356	4,904	1,900	5,038	1,883	4,998	1,849	4,825	1,711
AtD Cohort										
AtD Cohort Entering Year	17	8	0	0	0	0	0	0	0	0

Data Source:

ODS - IRAO Freeze Tables - IRO_BASE, CENSUS

ODS - OVPCC Demographic Table - OVPCC_DIAD_SEMESTER: Table population is from IRO_BASE with Pell and DCO groupings; MTT_ACCOUNT_DETAIL and IRO_REGS

ODS - OVPCC Achieving the Dream Tables - OVPCC_ATD_COHORT

**Appendix B - Figure 9:
Retention Disaggregated Data**

UHCC Fall Retention

	2006	2007	2008	2009	2010
Total	90.82%	91.09%	91.81%	93.15%	93.66%
Age					
Recent High School Graduates	92.20%	92.10%	93.43%	93.96%	95.07%
Other < 22 Year Olds	89.70%	89.88%	90.73%	92.89%	93.10%
22-24	89.90%	90.11%	90.05%	91.46%	92.54%
25-49	92.11%	92.84%	93.24%	93.90%	94.27%
>49	94.46%	93.76%	94.29%	94.13%	94.54%
Age Not Reported	100.00%	100.00%	100.00%	50.00%	100.00%
Race/Ethnicity					
American Indian or Alaska Native	92.49%	90.61%	92.37%	92.92%	95.25%
Asian	90.50%	90.85%	91.61%	92.61%	93.60%
Black or African American	89.54%	90.27%	91.84%	92.62%	92.91%
Hispanic/Latino of Any Race	90.07%	90.97%	92.94%	93.77%	93.68%
Native Hawaiian	91.05%	91.47%	92.36%	93.92%	93.60%
Other Pacific Islander	90.31%	89.29%	90.48%	94.07%	94.06%
White	92.67%	92.82%	92.80%	93.59%	94.41%
Two or More Races	89.81%	90.08%	90.47%	92.51%	92.95%
Unknown/Other	90.50%	90.54%	92.34%	94.02%	94.70%
Gender					
Female	91.24%	91.78%	92.30%	93.47%	93.95%
Male	90.30%	90.23%	91.18%	92.76%	93.32%
Not Reported	89.62%	90.61%	91.34%	92.96%	93.17%
Socio Economic (Pell)					
Received Pell	93.18%	93.63%	93.93%	94.75%	94.86%
Did not receive Pell	90.34%	90.52%	91.25%	92.52%	93.03%
Distance Completely On-Line Courses (DCO)					
Student Took 1 or More DCO	0.00%	89.47%	89.18%	91.71%	91.87%
Student Took No DCO	90.82%	91.39%	92.45%	93.58%	94.27%
AtD Cohort					
AtD Cohort Entering Year	92.64%	92.23%	92.96%	94.06%	94.85%

Defintion:

Retention refers to those students who are enrolled in a course at the fall census date and who do not drop or withdraw before the end of the semester. Within the University of Hawai'i Community College System, this has also been called Course Completion Rate.

Data Source:

ODS - IRAO Freeze Tables - IRO_BASE, CENSUS

ODS - OVPCD Demographic Table - OVPCD_DIAD_SEMESTER: Table population is from IRO_BASE with Pell and DCO groupings; MTT_ACCOUNT_DETAIL and IRO_REGS

ODS - OVPCD Achieving the Dream Tables - OVPCD_ATD_COHORT

UHCC Fall Retention General and Pre-Professional Students

	2006	2007	2008	2009	2010
Total	89.50%	90.10%	90.68%	92.38%	93.12%
Age					
Recent High School Graduates	91.40%	90.84%	92.49%	93.59%	94.67%
Other < 22 Year Olds	88.78%	89.36%	89.76%	92.23%	92.65%
22-24	88.23%	89.30%	88.90%	90.12%	92.09%
25-49	90.14%	91.38%	91.88%	92.95%	93.54%
>49	93.10%	92.33%	91.47%	93.39%	92.64%
Age Not Reported	0.00%	0.00%	0.00%	0.00%	0.00%
Race/Ethnicity					
American Indian or Alaska Native	90.91%	92.47%	91.28%	92.52%	94.39%
Asian	88.95%	89.78%	90.22%	91.54%	92.98%
Black or African American	90.13%	90.49%	89.85%	92.09%	91.46%
Hispanic/Latino of Any Race	88.67%	91.36%	93.32%	94.56%	93.18%
Native Hawaiian	90.28%	90.30%	91.09%	93.40%	93.17%
Other Pacific Islander	89.24%	87.18%	90.35%	92.99%	93.16%
White	91.33%	92.31%	92.04%	92.96%	93.91%
Two or More Races	88.63%	89.06%	89.62%	91.93%	92.65%
Unknown/Other	87.15%	89.18%	90.70%	91.68%	91.60%
Gender					
Female	90.39%	91.06%	91.26%	92.85%	93.70%
Male	88.21%	88.66%	89.83%	91.68%	92.30%
Not Reported	86.49%	90.16%	91.30%	95.44%	92.89%
Socio Economic (Pell)					
Received Pell	92.20%	92.87%	93.01%	94.07%	94.54%
Did not receive Pell	88.86%	89.32%	89.96%	91.62%	92.26%
Distance Completely On-Line Courses (DCO)					
Student Took 1 or More DCO	0.00%	89.69%	88.34%	91.54%	91.58%
Student Took No DCO	89.50%	90.17%	91.23%	92.62%	93.64%
AtD Cohort					
AtD Cohort Entering Year	91.53%	90.98%	91.72%	93.35%	94.33%

Defintion:

Retention refers to those students who are enrolled in a course at the fall census date and who do not drop or withdraw before the end of the semester. Within the University of Hawai'i Community College System, this has also been called Course Completion Rate.

Data Source:

ODS - IRAO Freeze Tables - IRO_BASE, CENSUS

ODS - OVPCC Demographic Table - OVPCC_DIAD_SEMESTER: Table population is from IRO_BASE with Pell and DCO groupings; MTT_ACCOUNT_DETAIL and IRO_REGS

ODS - OVPCC Achieving the Dream Tables - OVPCC_ATD_COHORT

UHCC Fall Retention Career and Technical Ed Students

	2006	2007	2008	2009	2010
Total	94.24%	94.15%	94.73%	95.39%	95.44%
Age					
Recent High School Graduates	94.34%	94.91%	95.78%	94.90%	96.16%
Other < 22 Year Olds	93.16%	92.77%	93.22%	95.52%	95.06%
22-24	95.20%	94.24%	94.47%	95.09%	94.60%
25-49	94.98%	95.29%	95.83%	95.75%	95.78%
>49	94.31%	94.70%	95.73%	94.09%	96.19%
Age Not Reported	100.00%	100.00%	0.00%	0.00%	0.00%
Race/Ethnicity					
American Indian or Alaska Native	94.44%	87.60%	94.53%	92.35%	95.40%
Asian	94.90%	94.58%	95.00%	95.65%	96.02%
Black or African American	88.94%	92.28%	95.89%	93.15%	95.57%
Hispanic/Latino of Any Race	93.08%	92.66%	93.80%	93.72%	96.12%
Native Hawaiian	93.34%	94.26%	94.99%	95.55%	94.90%
Other Pacific Islander	93.11%	94.66%	91.26%	95.84%	95.40%
White	95.25%	94.05%	95.17%	95.26%	95.73%
Two or More Races	92.67%	92.81%	93.64%	94.59%	94.33%
Unknown/Other	95.10%	94.71%	94.90%	97.20%	98.60%
Gender					
Female	94.08%	94.56%	95.21%	95.56%	95.33%
Male	94.39%	93.73%	94.26%	95.29%	95.54%
Not Reported	94.74%	96.03%	94.67%	92.00%	96.14%
Socio Economic (Pell)					
Received Pell	95.13%	94.96%	95.83%	96.06%	95.68%
Did not receive Pell	94.03%	93.94%	94.40%	95.08%	95.29%
Distance Completely On-Line Courses (DCO)					
Student Took 1 or More DCO	0.00%	91.32%	92.54%	93.33%	93.66%
Student Took No DCO	94.24%	94.57%	95.14%	95.85%	95.89%
AtD Cohort					
AtD Cohort Entering Year	94.42%	94.35%	95.15%	95.30%	95.67%

Defintion:

Retention refers to those students who are enrolled in a course at the fall census date and who do not drop or withdraw before the end of the semester. Within the University of Hawai'i Community College System, this has also been called Course Completion Rate.

Data Source:

ODS - IRAO Freeze Tables - IRO_BASE, CENSUS

ODS - OVPCC Demographic Table - OVPCC_DIAD_SEMESTER: Table population is from IRO_BASE with Pell and DCO groupings; MTT_ACCOUNT_DETAIL and IRO_REGS

ODS - OVPCC Achieving the Dream Tables - OVPCC_ATD_COHORT

UHCC Fall Retention All Other Students

	2006	2007	2008	2009	2010
Total	88.21%	88.20%	89.63%	91.12%	91.54%
Age					
Recent High School Graduates	88.82%	90.00%	90.86%	92.69%	93.31%
Other < 22 Year Olds	87.23%	86.82%	89.95%	90.96%	91.27%
22-24	85.39%	85.58%	86.10%	89.06%	90.35%
25-49	90.37%	90.77%	90.36%	91.98%	92.12%
>49	96.51%	94.38%	96.18%	95.40%	94.19%
Age Not Reported	100.00%	100.00%	100.00%	50.00%	100.00%
Race/Ethnicity					
American Indian or Alaska Native	92.86%	92.06%	91.23%	97.50%	100.00%
Asian	86.57%	86.78%	89.32%	90.26%	90.70%
Black or African American	88.04%	85.92%	90.32%	93.29%	92.44%
Hispanic/Latino of Any Race	89.95%	86.49%	90.17%	90.74%	90.48%
Native Hawaiian	87.73%	88.64%	89.94%	91.16%	91.49%
Other Pacific Islander	88.07%	86.14%	88.85%	94.69%	93.75%
White	92.29%	92.31%	91.52%	92.69%	93.38%
Two or More Races	88.57%	88.44%	87.38%	90.33%	91.46%
Unknown/Other	91.27%	87.60%	91.92%	95.99%	96.94%
Gender					
Female	89.31%	89.55%	90.93%	92.08%	92.27%
Male	86.58%	86.39%	87.78%	89.73%	90.48%
Not Reported	84.85%	69.44%	71.43%	84.62%	88.68%
Socio Economic (Pell)					
Received Pell	90.40%	93.32%	91.57%	93.50%	92.90%
Did not receive Pell	88.09%	87.89%	89.48%	90.81%	91.30%
Distance Completely On-Line Courses (DCO)					
Student Took 1 or More DCO	0.00%	86.93%	87.22%	90.34%	90.45%
Student Took No DCO	88.21%	88.57%	90.59%	91.55%	92.23%
AtD Cohort					
AtD Cohort Entering Year	93.18%	N/A	N/A	N/A	N/A

Defintion:

Retention refers to those students who are enrolled in a course at the fall census date and who do not drop or withdraw before the end of the semester. Within the University of Hawai'i Community College System, this has also been called Course Completion Rate.

Data Source:

ODS - IRAO Freeze Tables - IRO_BASE, CENSUS

ODS - OVPCC Demographic Table - OVPCC_DIAD_SEMESTER: Table population is from IRO_BASE with Pell and DCO groupings; MTT_ACCOUNT_DETAIL and IRO_REGS

ODS - OVPCC Achieving the Dream Tables - OVPCC_ATD_COHORT

**Appendix C - Figure 10:
Persistence Disaggregated Data**

UHCC Persistence Fall to Spring

	2006	2007	2008	2009	2010
Total	66.90%	68.75%	69.63%	71.54%	70.97%
Age					
Recent High School Graduates	75.56%	76.79%	78.90%	79.97%	80.28%
Other< 22 Year Olds	67.80%	70.01%	69.56%	71.44%	71.08%
22-24	63.11%	63.43%	66.12%	67.15%	65.86%
25-49	63.69%	66.24%	66.32%	69.94%	69.45%
>49	65.59%	63.31%	67.82%	67.73%	68.92%
Age Not Reported	66.67%	66.67%	0.00%	0.00%	100.00%
Race/Ethnicity					
American Indian or Alaska Native	64.63%	72.29%	60.55%	66.41%	66.39%
Asian	70.13%	71.44%	72.09%	72.90%	73.09%
Black or African American	63.27%	60.08%	63.33%	73.13%	65.51%
Hispanic/Latino of Any Race	59.92%	61.95%	63.95%	68.01%	69.87%
Native Hawaiian	64.50%	67.19%	68.34%	71.60%	70.29%
Other Pacific Islander	60.35%	65.82%	62.44%	65.97%	64.43%
White	63.73%	64.81%	67.92%	69.55%	68.72%
Two or More Races	65.64%	68.71%	68.39%	70.87%	70.76%
Unknown/Other	65.85%	67.25%	68.96%	71.46%	67.31%
Gender					
Female	67.17%	69.45%	69.79%	72.22%	71.26%
Male	66.38%	67.53%	69.01%	70.41%	70.31%
Not Reported	58.18%	78.08%	76.09%	72.08%	72.29%
Socio Economic (Pell)					
Received Pell	78.18%	80.62%	81.70%	83.05%	82.35%
Did not receive Pell	64.78%	66.25%	66.64%	67.32%	65.46%
Distance Completely On-Line Courses (DCO)					
Student Took 1 or More DCO	0.00%	68.64%	67.52%	70.23%	70.22%
Student Took No DCO	66.81%	68.65%	69.89%	71.72%	71.04%
AtD Cohort					
AtD Cohort Entering Year	68.58%	70.66%	72.45%	73.74%	73.16%

Data Source:

ODS - IRAO Freeze Tables - IRO_BASE, CENSUS

ODS - OVPCC Demographic Table - OVPCC_DIAD_SEMESTER: Table population is from IRO_BASE with Pell and DCO groupings; MTT_ACCOUNT_DETAIL and IRO_REGS

ODS - OVPCC Achieving the Dream Tables - OVPCC_ATD_COHORT

UHCC Persistence Fall to Spring General and Pre-Professional Students

	2006	2007	2008	2009	2010
Total	67.03%	69.30%	69.83%	72.68%	71.53%
Age					
Recent High School Graduates	77.32%	77.59%	79.82%	82.03%	81.07%
Other < 22 Year Olds	67.92%	70.10%	69.56%	72.20%	71.32%
22-24	59.96%	61.44%	63.40%	66.73%	65.22%
25-49	63.45%	67.38%	65.91%	70.38%	69.57%
>49	66.78%	64.16%	70.35%	71.60%	71.29%
Age Not Reported	0.00%	0.00%	0.00%	0.00%	0.00%
Race/Ethnicity					
American Indian or Alaska Native	66.67%	77.27%	58.46%	67.14%	66.18%
Asian	70.11%	72.07%	71.96%	74.31%	73.61%
Black or African American	64.43%	60.67%	64.67%	75.13%	67.70%
Hispanic/Latino of Any Race	63.99%	60.47%	66.67%	69.71%	68.58%
Native Hawaiian	64.27%	68.98%	69.40%	73.10%	70.65%
Other Pacific Islander	59.24%	64.71%	59.55%	65.09%	65.37%
White	64.16%	65.42%	69.09%	70.43%	69.48%
Two or More Races	65.92%	68.84%	67.62%	71.68%	71.76%
Unknown/Other	69.83%	63.59%	70.72%	71.20%	68.29%
Gender					
Female	67.60%	70.06%	70.11%	73.85%	72.11%
Male	65.86%	67.84%	68.90%	70.74%	70.20%
Not Reported	58.33%	74.29%	73.33%	66.23%	76.64%
Socio Economic (Pell)					
Received Pell	77.47%	79.56%	79.42%	82.53%	81.36%
Did not receive Pell	64.66%	66.63%	66.94%	68.45%	66.04%
Distance Completely On-Line Courses (DCO)					
Student Took 1 or More DCO	0.00%	68.92%	66.95%	70.19%	70.17%
Student Took No DCO	66.90%	69.25%	70.25%	73.20%	71.78%
AtD Cohort					
AtD Cohort Entering Year	69.19%	70.90%	72.80%	74.72%	73.86%

Data Source:

ODS - IRAO Freeze Tables - IRO_BASE, CENSUS

ODS - OVPCC Demographic Table - OVPCC_DIAD_SEMESTER: Table population is from IRO_BASE with Pell and DCO groupings; MTT_ACCOUNT_DETAIL and IRO_REGS

ODS - OVPCC Achieving the Dream Tables - OVPCC_ATD_COHORT

UHCC Persistence Fall to Spring Career and Technical Ed Students

	2006	2007	2008	2009	2010
Total	70.76%	71.83%	73.20%	73.37%	73.35%
Age					
Recent High School Graduates	73.88%	74.59%	76.59%	76.08%	79.47%
Other < 22 Year Olds	72.85%	74.63%	75.03%	75.04%	74.53%
22-24	70.76%	69.28%	73.88%	70.91%	69.41%
25-49	68.06%	69.93%	70.45%	72.40%	72.45%
>49	72.16%	67.52%	71.24%	72.13%	73.20%
Age Not Reported	100.00%	100.00%	0.00%	0.00%	0.00%
Race/Ethnicity					
American Indian or Alaska Native	65.52%	67.74%	69.44%	68.00%	70.00%
Asian	73.84%	73.92%	76.16%	74.82%	75.90%
Black or African American	63.51%	69.01%	66.27%	75.42%	66.21%
Hispanic/Latino of Any Race	59.85%	75.54%	63.47%	69.15%	74.59%
Native Hawaiian	67.81%	68.76%	70.05%	71.81%	72.09%
Other Pacific Islander	63.84%	72.04%	68.40%	69.05%	65.26%
White	70.58%	69.43%	72.49%	73.90%	72.84%
Two or More Races	68.96%	71.76%	73.84%	73.11%	71.91%
Unknown/Other	72.60%	74.38%	71.19%	77.61%	82.93%
Gender					
Female	71.44%	73.27%	74.40%	74.40%	74.33%
Male	70.48%	70.46%	72.08%	72.35%	72.57%
Not Reported	60.87%	84.38%	80.95%	89.29%	71.93%
Socio Economic (Pell)					
Received Pell	79.77%	82.91%	85.72%	84.01%	83.91%
Did not receive Pell	69.16%	69.62%	70.18%	69.36%	68.01%
Distance Completely On-Line Courses (DCO)					
Student Took 1 or More DCO	0.00%	71.69%	73.14%	74.38%	73.34%
Student Took No DCO	70.92%	71.94%	73.30%	73.25%	73.45%
AtD Cohort					
AtD Cohort Entering Year	67.78%	70.37%	71.74%	71.82%	71.91%

Data Source:

ODS - IRAO Freeze Tables - IRO_BASE, CENSUS

ODS - OVPCC Demographic Table - OVPCC_DIAD_SEMESTER: Table population is from IRO_BASE with Pell and DCO groupings; MTT_ACCOUNT_DETAIL and IRO_REGS

ODS - OVPCC Achieving the Dream Tables - OVPCC_ATD_COHORT

UHCC Persistence Fall to Spring All Other Students

	2006	2007	2008	2009	2010
Total	55.19%	56.97%	57.10%	57.74%	56.02%
Age					
Recent High School Graduates	67.18%	78.73%	80.35%	73.55%	67.90%
Other< 22 Year Olds	56.37%	58.70%	57.20%	57.17%	57.78%
22-24	54.86%	53.51%	53.99%	54.60%	54.68%
25-49	50.38%	49.49%	51.80%	58.16%	53.26%
>49	56.67%	58.05%	60.25%	55.46%	55.56%
Age Not Reported	0.00%	0.00%	0.00%	0.00%	100.00%
Race/Ethnicity					
American Indian or Alaska Native	50.00%	62.50%	37.50%	50.00%	25.00%
Asian	59.70%	61.22%	60.07%	59.18%	58.31%
Black or African American	54.55%	37.50%	40.00%	50.00%	43.33%
Hispanic/Latino of Any Race	39.29%	38.71%	52.24%	53.85%	61.70%
Native Hawaiian	52.20%	49.62%	53.77%	56.38%	55.03%
Other Pacific Islander	52.50%	53.62%	58.93%	59.38%	44.12%
White	50.85%	54.58%	54.61%	56.28%	52.61%
Two or More Races	54.83%	59.31%	55.43%	56.62%	59.65%
Unknown/Other	49.12%	65.71%	62.77%	62.92%	45.45%
Gender					
Female	55.53%	57.68%	56.51%	56.36%	54.31%
Male	54.73%	55.86%	57.98%	59.96%	58.56%
Not Reported	50.00%	66.67%	60.00%	47.62%	56.76%
Socio Economic (Pell)					
Received Pell	60.00%	65.38%	86.11%	80.00%	90.24%
Did not receive Pell	55.15%	56.88%	56.70%	57.35%	55.40%
Distance Completely On-Line Courses (DCO)					
Student Took 1 or More DCO	0.00%	57.09%	53.55%	57.29%	59.36%
Student Took No DCO	55.19%	56.95%	57.73%	57.85%	55.01%
AtD Cohort					
AtD Cohort Entering Year	53.66%	56.52%	0.00%	0.00%	0.00%

Data Source:

ODS - IRAO Freeze Tables - IRO_BASE, CENSUS

ODS - OVPCC Demographic Table - OVPCC_DIAD_SEMESTER: Table population is from IRO_BASE with Pell and DCO groupings; MTT_ACCOUNT_DETAIL and IRO_REGS

ODS - OVPCC Achieving the Dream Tables - OVPCC_ATD_COHORT

**Appendix D - Figure 13a:
Developmental Education – Success in the Next College Level
Course Disaggregated Data**

UHCC Success in College Level Course from Developmental Course

Math

	2008-2009		2009-2010		2010-2011	
	Entered	Successful	Entered	Successful	Entered	Successful
Entering from 1 Level Below	504	306	552	331	610	375
Percent Successful in College Level Course	61%		60%		61%	
Age						
Recent High School Graduates	165	104	163	97	154	95
Other < 22 Year Olds	191	109	212	112	245	135
22-24	48	28	54	36	61	39
25-49	97	62	118	82	137	95
>49	3	3	5	4	13	11
Age Not Reported	0	0	0	0	0	0
Race/Ethnicity						
American Indian or Alaska Native	1	1	2	2	1	0
Asian	265	159	269	157	249	152
Black or African American	4	4	3	1	6	2
Hispanic/Latino of Any Race	4	3	12	7	13	7
Native Hawaiian	95	59	116	68	160	94
Other Pacific Islander	15	11	21	8	17	6
White	46	28	67	49	91	71
Two or More Races	69	39	57	37	70	42
Unknown/Other	5	2	5	2	3	1
Gender						
Female	283	185	331	213	341	214
Male	219	119	218	115	265	158
Not Reported	2	2	3	3	4	3
Socio Economic (Pell)						
Received Pell	132	80	172	113	211	132
Did not receive Pell	372	226	380	218	399	243
Distance Completely On-Line Courses (DCO)						
Student Took 1 or More DCO	57	31	62	40	112	66
Student Took No DCO	447	275	490	291	498	309

Students who took and successfully completed course 1 level below college level in the fall and took college level in the spring.

Data Source:

ODS - IRAO Freeze Tables - IRO_BASE, CENSUS

ODS - OVPCC Demographic Table - OVPCC_DIAD_SEMESTER: Table population is from IRO_BASE with Pell and DCO groupings, MTT_ACCOUNT_DETAIL and IRO_REGS

ODS - OVPCC Achieving the Dream Tables - OVPCC_ATD_COURSE

UHCC Success in College Level Course from Developmental Course

Reading

	2008-2009		2009-2010		2010-2011	
	Entered	Successful	Entered	Successful	Entered	Successful
Entering from 1 Level Below	48	36	41	29	53	37
Percent Successful in College Level Course	75%		71%		70%	
Age						
Recent High School Graduates	25	18	26	20	27	22
Other < 22 Year Olds	12	9	9	6	18	11
22-24	0	0	0	0	3	1
25-49	8	5	6	3	5	3
>49	3	3	0	0	0	0
Age Not Reported	0	0	0	0	0	0
Race/Ethnicity						
American Indian or Alaska Native	0	0	0	0	0	0
Asian	18	16	7	4	11	9
Black or African American	1	0	0	0	0	0
Hispanic/Latino of Any Race	3	3	2	1	1	1
Native Hawaiian	19	12	24	20	25	16
Other Pacific Islander	1	1	2	0	3	3
White	3	1	4	3	7	4
Two or More Races	3	2	2	1	6	4
Unknown/Other	0	0	0	0	0	0
Gender						
Female	31	24	26	21	41	26
Male	16	10	14	8	11	10
Not Reported	1	1	1	0	1	1
Socio Economic (Pell)						
Received Pell	16	12	16	13	36	25
Did not receive Pell	32	23	25	16	17	12
Distance Completely On-Line Courses (DCO)						
Student Took 1 or More DCO	5	3	0	1	7	3
Student Took No DCO	43	32	41	28	46	34

Students who took and successfully completed course 1 level below college level in the fall and took college level in the spring.

Data Source:

ODS - IRAO Freeze Tables - IRO_BASE, CENSUS

ODS - OVPCC Demographic Table - OVPCC_DIAD_SEMESTER: Table population is from IRO_BASE with Pell and DCO groupings, MTT_ACCOUNT_DETAIL and IRO_REGS

ODS - OVPCC Achieving the Dream Tables - OVPCC_ATD_COURSE

UHCC Success in College Level Course from Developmental Course

Writing

	2008-2009		2009-2010		2010-2011	
	Entered	Successful	Entered	Successful	Entered	Successful
Entering from 1 Level Below	802	563	938	622	919	601
Percent Successful in College Level Course	70%		66%		65%	
Age						
Recent High School Graduates	432	323	459	318	441	291
Other < 22 Year Olds	223	139	279	171	237	144
22-24	55	34	47	28	68	41
25-49	86	62	144	101	161	115
>49	6	5	9	4	12	10
Age Not Reported	0	0	0	0	0	0
Race/Ethnicity						
American Indian or Alaska Native	2	2	1	1	1	1
Asian	357	262	401	294	354	241
Black or African American	9	6	17	12	20	12
Hispanic/Latino of Any Race	16	12	21	16	13	9
Native Hawaiian	201	123	233	135	306	186
Other Pacific Islander	35	20	33	17	34	21
White	83	61	90	62	86	63
Two or More Races	92	71	125	71	101	66
Unknown/Other	7	6	17	14	4	2
Gender						
Female	491	333	523	359	524	333
Male	308	227	410	261	384	257
Not Reported	3	3	5	2	11	11
Socio Economic (Pell)						
Received Pell	214	143	335	212	417	271
Did not receive Pell	588	420	603	410	502	330
Distance Completely On-Line Courses (DCO)						
Student Took 1 or More DCO	52	36	88	55	78	49
Student Took No DCO	750	527	850	567	841	552

Students who took and successfully completed course 1 level below college level in the fall and took college level in the spring.

Data Source:

ODS - IRAO Freeze Tables - IRO_BASE, CENSUS

ODS - OVPCC Demographic Table - OVPCC_DIAD_SEMESTER: Table population is from IRO_BASE with Pell and DCO groupings, MTT_ACCOUNT_DETAIL and IRO_REGS

ODS - OVPCC Achieving the Dream Tables - OVPCC_ATD_COURSE

UHCC Success in College Level Course from Developmental Course General and Pre-Professional Students

Math

	2008-2009		2009-2010		2010-2011	
	Entered	Successful	Entered	Successful	Entered	Successful
Entering from 1 Level Below	374	226	433	254	452	285
Percent Successful in College Level Course	60%		59%		63%	
Age						
Recent High School Graduates	129	84	135	79	133	88
Other < 22 Year Olds	140	76	166	85	174	96
22-24	34	19	38	24	42	27
25-49	69	45	91	63	99	70
>49	2	2	3	3	4	4
Age Not Reported	0	0	0	0	0	0
Race/Ethnicity						
American Indian or Alaska Native	1	1	2	2	1	0
Asian	191	114	209	118	181	114
Black or African American	3	3	3	1	5	2
Hispanic/Latino of Any Race	3	3	10	6	10	6
Native Hawaiian	77	46	95	57	124	76
Other Pacific Islander	12	8	19	6	13	6
White	33	20	50	38	62	48
Two or More Races	52	30	42	25	56	33
Unknown/Other	2	1	3	1	0	0
Gender						
Female	213	138	264	169	265	171
Male	159	86	167	83	185	112
Not Reported	2	2	2	2	2	2
Socio Economic (Pell)						
Received Pell	105	63	150	98	166	111
Did not receive Pell	269	163	283	156	286	174
Distance Completely On-Line Courses (DCO)						
Student Took 1 or More DCO	40	22	49	32	88	55
Student Took No DCO	334	204	384	222	364	230

Students who took and successfully completed course 1 level below college level in the fall and took college level in the spring.

Data Source:

ODS - IRAO Freeze Tables - IRO_BASE, CENSUS

ODS - OVPCC Demographic Table - OVPCC_DIAD_SEMESTER: Table population is from IRO_BASE with Pell and DCO groupings, MTT_ACCOUNT_DETAIL and IRO_REGS

ODS - OVPCC Achieving the Dream Tables - OVPCC_ATD_COURSE

UHCC Success in College Level Course from Developmental Course General and Pre-Professional Students

Reading

	2008-2009		2009-2010		2010-2011	
	Entered	Successful	Entered	Successful	Entered	Successful
Entering from 1 Level Below	36	30	29	21	31	21
Percent Successful in College Level Course	83%		72%		68%	
Age						
Recent High School Graduates	18	16	19	15	17	14
Other < 22 Year Olds	12	9	7	4	9	6
22-24	0	0	0	0	3	1
25-49	3	2	3	2	2	0
>49	3	3	0	0	0	0
Age Not Reported	0	0	0	0	0	0
Race/Ethnicity						
American Indian or Alaska Native	0	0	0	0	0	0
Asian	15	14	5	4	10	8
Black or African American	1	0	0	0	0	0
Hispanic/Latino of Any Race	3	3	0	0	1	1
Native Hawaiian	13	10	16	13	11	7
Other Pacific Islander	1	1	2	0	2	1
White	2	1	4	3	4	2
Two or More Races	1	1	2	1	3	2
Unknown/Other	0	0	0	0	0	0
Gender						
Female	23	20	17	14	26	17
Male	12	9	11	7	5	4
Not Reported	1	1	1	0	0	0
Socio Economic (Pell)						
Received Pell	13	11	9	8	20	14
Did not receive Pell	23	19	20	13	11	7
Distance Completely On-Line Courses (DCO)						
Student Took 1 or More DCO	4	2	0	1	7	3
Student Took No DCO	32	28	29	20	24	18

Students who took and successfully completed course 1 level below college level in the fall and took college level in the spring.

Data Source:

ODS - IRAO Freeze Tables - IRO_BASE, CENSUS

ODS - OVPCC Demographic Table - OVPCC_DIAD_SEMESTER: Table population is from IRO_BASE with Pell and DCO groupings, MTT_ACCOUNT_DETAIL and IRO_REGS

ODS - OVPCC Achieving the Dream Tables - OVPCC_ATD_COURSE

UHCC Success in College Level Course from Developmental Course General and Pre-Professional Students

Writing

	2008-2009		2009-2010		2010-2011	
	Entered	Successful	Entered	Successful	Entered	Successful
Entering from 1 Level Below	571	402	697	465	637	411
Percent Successful in College Level Course	70%		67%		65%	
Age						
Recent High School Graduates	318	240	368	256	333	220
Other < 22 Year Olds	153	94	196	120	159	96
22-24	39	25	28	15	46	26
25-49	55	38	99	72	91	62
>49	6	5	6	2	8	7
Age Not Reported	0	0	0	0	0	0
Race/Ethnicity						
American Indian or Alaska Native	2	2	0	0	1	1
Asian	257	190	298	222	246	168
Black or African American	8	5	16	12	14	9
Hispanic/Latino of Any Race	12	8	16	12	9	6
Native Hawaiian	136	81	175	97	210	126
Other Pacific Islander	23	14	26	15	23	13
White	61	45	61	40	55	38
Two or More Races	67	54	91	56	76	48
Unknown/Other	5	3	14	11	3	2
Gender						
Female	365	253	399	275	384	243
Male	204	147	296	190	243	158
Not Reported	2	2	2	0	10	10
Socio Economic (Pell)						
Received Pell	156	104	258	164	288	184
Did not receive Pell	415	298	439	301	349	227
Distance Completely On-Line Courses (DCO)						
Student Took 1 or More DCO	36	26	57	36	55	30
Student Took No DCO	535	376	640	429	582	381

Students who took and successfully completed course 1 level below college level in the fall and took college level in the spring.

Data Source:

ODS - IRAO Freeze Tables - IRO_BASE, CENSUS

ODS - OVPCC Demographic Table - OVPCC_DIAD_SEMESTER: Table population is from IRO_BASE with Pell and DCO groupings, MTT_ACCOUNT_DETAIL and IRO_REGS

ODS - OVPCC Achieving the Dream Tables - OVPCC_ATD_COURSE

UHCC Success in College Level Course from Developmental Course Career and Technical Ed Students

Math

	2008-2009		2009-2010		2010-2011	
	Entered	Successful	Entered	Successful	Entered	Successful
Entering from 1 Level Below	75	46	61	43	98	57
Percent Successful in College Level Course	61%		70%		58%	
Age						
Recent High School Graduates	31	17	16	11	14	6
Other < 22 Year Olds	25	17	22	15	39	18
22-24	5	4	9	7	15	9
25-49	13	7	12	9	21	17
>49	1	1	2	1	9	7
Age Not Reported	0	0	0	0	0	0
Race/Ethnicity						
American Indian or Alaska Native	0	0	0	0	0	0
Asian	45	26	29	22	47	25
Black or African American	1	1	0	0	1	0
Hispanic/Latino of Any Race	1	0	1	0	1	1
Native Hawaiian	9	6	15	7	18	9
Other Pacific Islander	2	2	1	1	1	0
White	6	5	6	4	19	14
Two or More Races	9	5	8	8	10	7
Unknown/Other	2	1	1	1	1	1
Gender						
Female	33	21	36	26	38	24
Male	42	25	24	16	59	33
Not Reported	0	0	1	1	1	0
Socio Economic (Pell)						
Received Pell	22	13	20	13	39	19
Did not receive Pell	53	33	41	30	59	38
Distance Completely On-Line Courses (DCO)						
Student Took 1 or More DCO	7	4	10	7	15	6
Student Took No DCO	68	42	51	36	83	51

Students who took and successfully completed course 1 level below college level in the fall and took college level in the spring.

Data Source:

ODS - IRAO Freeze Tables - IRO_BASE, CENSUS

ODS - OVPCC Demographic Table - OVPCC_DIAD_SEMESTER: Table population is from IRO_BASE with Pell and DCO groupings, MTT_ACCOUNT_DETAIL and IRO_REGS

ODS - OVPCC Achieving the Dream Tables - OVPCC_ATD_COURSE

UHCC Success in College Level Course from Developmental Course Career and Technical Ed Students

Reading

	2008-2009		2009-2010		2010-2011	
	Entered	Successful	Entered	Successful	Entered	Successful
Entering from 1 Level Below	11	5	11	8	22	16
Percent Successful in College Level Course	45%		73%		73%	
Age						
Recent High School Graduates	7	2	7	5	10	8
Other < 22 Year Olds	0	0	2	2	9	5
22-24	0	0	0	0	0	0
25-49	4	3	2	1	3	3
>49	0	0	0	0	0	0
Age Not Reported	0	0	0	0	0	0
Race/Ethnicity						
American Indian or Alaska Native	0	0	0	0	0	0
Asian	3	2	1	0	1	1
Black or African American	0	0	0	0	0	0
Hispanic/Latino of Any Race	0	0	2	1	0	0
Native Hawaiian	6	2	8	7	14	9
Other Pacific Islander	0	0	0	0	1	2
White	1	0	0	0	3	2
Two or More Races	1	1	0	0	3	2
Unknown/Other	0	0	0	0	0	0
Gender						
Female	8	4	8	7	15	9
Male	3	1	3	1	6	6
Not Reported	0	0	0	0	1	1
Socio Economic (Pell)						
Received Pell	3	1	7	5	16	11
Did not receive Pell	8	4	4	3	6	5
Distance Completely On-Line Courses (DCO)						
Student Took 1 or More DCO	1	1	0	0	0	0
Student Took No DCO	10	4	11	8	22	16

Students who took and successfully completed course 1 level below college level in the fall and took college level in the spring.

Data Source:

ODS - IRAO Freeze Tables - IRO_BASE, CENSUS

ODS - OVPCC Demographic Table - OVPCC_DIAD_SEMESTER: Table population is from IRO_BASE with Pell and DCO groupings, MTT_ACCOUNT_DETAIL and IRO_REGS

ODS - OVPCC Achieving the Dream Tables - OVPCC_ATD_COURSE

UHCC Success in College Level Course from Developmental Course Career and Technical Ed Students

Writing

	2008-2009		2009-2010		2010-2011	
	Entered	Successful	Entered	Successful	Entered	Successful
Entering from 1 Level Below	168	108	188	122	246	162
Percent Successful in College Level Course	64%		65%		66%	
Age						
Recent High School Graduates	81	56	77	52	92	58
Other < 22 Year Olds	47	26	60	37	65	40
22-24	12	5	13	8	20	12
25-49	28	21	35	23	65	49
>49	0	0	3	2	4	3
Age Not Reported	0	0	0	0	0	0
Race/Ethnicity						
American Indian or Alaska Native	0	0	1	1	0	0
Asian	67	47	74	53	93	59
Black or African American	1	1	1	0	5	2
Hispanic/Latino of Any Race	2	2	4	3	3	2
Native Hawaiian	53	32	48	31	89	57
Other Pacific Islander	10	4	6	2	10	7
White	17	11	26	19	26	21
Two or More Races	18	11	26	11	19	14
Unknown/Other	0	0	2	2	1	0
Gender						
Female	89	51	94	65	116	72
Male	78	56	91	55	129	89
Not Reported	1	1	3	2	1	1
Socio Economic (Pell)						
Received Pell	54	35	69	45	125	83
Did not receive Pell	114	73	119	77	121	79
Distance Completely On-Line Courses (DCO)						
Student Took 1 or More DCO	15	9	22	13	18	15
Student Took No DCO	153	99	166	109	228	147

Students who took and successfully completed course 1 level below college level in the fall and took college level in the spring.

Data Source:

ODS - IRAO Freeze Tables - IRO_BASE, CENSUS

ODS - OVPCC Demographic Table - OVPCC_DIAD_SEMESTER: Table population is from IRO_BASE with Pell and DCO groupings, MTT_ACCOUNT_DETAIL and IRO_REGS

ODS - OVPCC Achieving the Dream Tables - OVPCC_ATD_COURSE

UHCC Success in College Level Course from Developmental Course All Other Students

Math

	2008-2009		2009-2010		2010-2011	
	Entered	Successful	Entered	Successful	Entered	Successful
Entering from 1 Level Below	55	34	58	34	60	33
Percent Successful in College Level Course	62%		59%		55%	
Age						
Recent High School Graduates	5	3	12	7	7	1
Other < 22 Year Olds	26	16	24	12	32	21
22-24	9	5	7	5	4	3
25-49	15	10	15	10	17	8
>49	0	0	0	0	0	0
Age Not Reported	0	0	0	0	0	0
Race/Ethnicity						
American Indian or Alaska Native	0	0	0	0	0	0
Asian	29	19	31	17	21	13
Black or African American	0	0	0	0	0	0
Hispanic/Latino of Any Race	0	0	1	1	2	0
Native Hawaiian	9	7	6	4	18	9
Other Pacific Islander	1	1	1	1	3	0
White	7	3	11	7	10	9
Two or More Races	8	4	7	4	4	2
Unknown/Other	1	0	1	0	2	0
Gender						
Female	37	26	31	18	38	19
Male	18	8	27	16	21	13
Not Reported	0	0	0	0	1	1
Socio Economic (Pell)						
Received Pell	5	4	2	2	6	2
Did not receive Pell	50	30	56	32	54	31
Distance Completely On-Line Courses (DCO)						
Student Took 1 or More DCO	10	5	3	1	9	5
Student Took No DCO	45	29	55	33	51	28

Students who took and successfully completed course 1 level below college level in the fall and took college level in the spring.

Data Source:

ODS - IRAO Freeze Tables - IRO_BASE, CENSUS

ODS - OVPCC Demographic Table - OVPCC_DIAD_SEMESTER: Table population is from IRO_BASE with Pell and DCO groupings, MTT_ACCOUNT_DETAIL and IRO_REGS

ODS - OVPCC Achieving the Dream Tables - OVPCC_ATD_COURSE

UHCC Success in College Level Course from Developmental Course All Other Students

Reading

	2008-2009		2009-2010		2010-2011	
	Entered	Successful	Entered	Successful	Entered	Successful
Entering from 1 Level Below	1	0	1	0	0	0
Percent Successful in College Level Course	0%		0%		0%	
Age						
Recent High School Graduates	0	0	0	0	0	0
Other < 22 Year Olds	0	0	0	0	0	0
22-24	0	0	0	0	0	0
25-49	1	0	1	0	0	0
>49	0	0	0	0	0	0
Age Not Reported	0	0	0	0	0	0
Race/Ethnicity						
American Indian or Alaska Native	0	0	0	0	0	0
Asian	0	0	0	0	0	0
Black or African American	0	0	0	0	0	0
Hispanic/Latino of Any Race	0	0	0	0	0	0
Native Hawaiian	0	0	0	0	0	0
Other Pacific Islander	0	0	0	0	0	0
White	0	0	0	0	0	0
Two or More Races	0	0	0	0	0	0
Unknown/Other	0	0	0	0	0	0
Gender						
Female	0	0	0	0	0	0
Male	0	0	0	0	0	0
Not Reported	0	0	0	0	0	0
Socio Economic (Pell)						
Received Pell	0	0	0	0	0	0
Did not receive Pell	0	0	0	0	0	0
Distance Completely On-Line Courses (DCO)						
Student Took 1 or More DCO	0	0	0	0	0	0
Student Took No DCO	0	0	0	0	0	0

Students who took and successfully completed course 1 level below college level in the fall and took college level in the spring.

Data Source:

ODS - IRAO Freeze Tables - IRO_BASE, CENSUS

ODS - OVPCC Demographic Table - OVPCC_DIAD_SEMESTER: Table population is from IRO_BASE with Pell and DCO groupings, MTT_ACCOUNT_DETAIL and IRO_REGS

ODS - OVPCC Achieving the Dream Tables - OVPCC_ATD_COURSE

UHCC Success in College Level Course from Developmental Course All Other Students

Writing

	2008-2009		2009-2010		2010-2011	
	Entered	Successful	Entered	Successful	Entered	Successful
Entering from 1 Level Below	63	53	53	35	36	28
Percent Successful in College Level Course	84%		66%		78%	
Age						
Recent High School Graduates	33	27	14	10	16	13
Other < 22 Year Olds	23	19	23	14	13	8
22-24	4	4	6	5	2	3
25-49	3	3	10	6	5	4
>49	0	0	0	0	0	0
Age Not Reported	0	0	0	0	0	0
Race/Ethnicity						
American Indian or Alaska Native	0	0	0	0	0	0
Asian	33	25	29	19	15	14
Black or African American	0	0	0	0	1	1
Hispanic/Latino of Any Race	2	2	1	1	1	1
Native Hawaiian	12	10	10	7	7	3
Other Pacific Islander	2	2	1	0	1	1
White	5	5	3	3	5	4
Two or More Races	7	6	8	4	6	4
Unknown/Other	2	3	1	1	0	0
Gender						
Female	37	29	30	19	24	18
Male	26	24	23	16	12	10
Not Reported	0	0	0	0	0	0
Socio Economic (Pell)						
Received Pell	4	4	8	3	4	4
Did not receive Pell	59	49	45	32	32	24
Distance Completely On-Line Courses (DCO)						
Student Took 1 or More DCO	1	1	9	6	5	4
Student Took No DCO	62	52	44	29	31	24

Students who took and successfully completed course 1 level below college level in the fall and took college level in the spring.

Data Source:

ODS - IRAO Freeze Tables - IRO_BASE, CENSUS

ODS - OVPCC Demographic Table - OVPCC_DIAD_SEMESTER: Table population is from IRO_BASE with Pell and DCO groupings, MTT_ACCOUNT_DETAIL and IRO_REGS

ODS - OVPCC Achieving the Dream Tables - OVPCC_ATD_COURSE