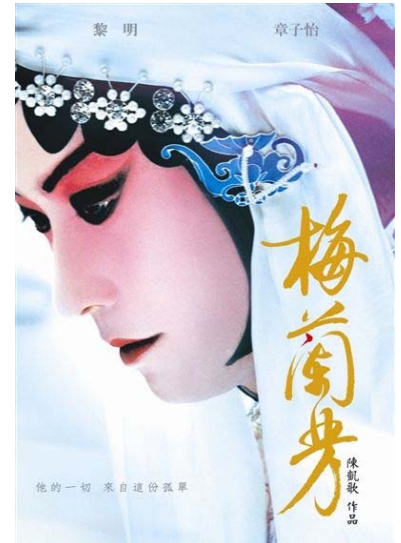




UNIVERSITY of HAWAII
MĀNOA
Kennedy Theatre

Department of Theatre and Dance
University of Hawai'i at Mānoa
1770 East-West Road
Honolulu, HI 96822
E-mail: ktpub@hawaii.edu

Contact: Tracy Robinson, Publicity Director
Phone: (808) 956-2598
Fax: (808) 956-4234
Box Office: (808) 956-7655
Images online: <http://www.hawaii.edu/kennedy>



Media Release • 2009 - 2010 Season

January 15, 2010

FOR IMMEDIATE RELEASE

“The Art and Life of Mei Lanfang”

Exhibition of China's Most Renowned Jingju (Beijing opera) Actor at UHM's Commons Gallery

The Jiangsu Province Department of Culture, in conjunction with UHM Kennedy Theatre's Jingju (Beijing opera) production of *The White Snake*, will be sending an exhibit to be displayed at the Commons Gallery, UH Mānoa Art Building, Feb. 5 from 2:30 to 4 p.m. and Feb. 8 thru 12 from 10:30 a.m. to 4:00 p.m. Experience the beauty and artistry of China's most renowned Jingju actor in this exhibition, entitled “The Art and Life of Mei Lanfang.” Recognized as the first to introduce Jingju (Beijing opera) to America, Mei Lanfang's most famous roles were those of female characters and his skillful portrayal of women won him international acclaim. The exhibit will be comprised of historical photographs, stunning ornaments, costumes and weaponry from some of his best-known performances, as well as displays of a variety of media from Mei Lanfang's 50-year stage career. Curators and staff members from the Mei Lanfang Museum in Taizhou, the Taizhou City Bureau of Culture, and the Jiangsu Province Department of Culture have come to UHM to personally install the exhibit.

WHAT: “The Art and Life of Mei Lanfang” *Exhibition*

SPONSORED BY: The Jiangsu Province Department of Culture

WHEN: Feb. 5 from 2:30 to 4:00 p.m. and Feb. 8 thru 12 from 10:30 a.m. to 4:00 p.m.

WHERE: Commons Gallery, UH Mānoa Art Building, first floor
2535 McCarthy Mall, Honolulu, HI 96822

Admission is free and open to the public.

Call 956-6888 for more information or visit www.hawaii.edu/artgallery.